



STATISTICAL YEARBOOK 2017

PUBLISHED BY DEPARTMENT OF STATISTICS SINT MAARTEN



Published by Department of Statistics Sint Maarten
St. Maarten 2017

Office Address:
Government Administration Building
Soualiga Road #1
Philipsburg, Sint Maarten

Email: statinfo@sintmaartengov.org
www.stat.gov.sx

Contents of this Statistical Yearbook may be quoted provided the source is clearly indicated.

PREFACE

The Department of Statistics Sint Maarten (STAT) is pleased to issue the Statistical Yearbook 2017.

This year has been an eventful one with catastrophic hurricane Irma leaving our island devastated. Despite the delay caused by Irma, STAT is happy to publish the current update of this statistical series.

In this new edition, the latest statistics over the past 3 years can be found; on topics ranging from St. Maarten's population, election results, health & education sectors, labour market, economy, tourism & aviation industries and much more.

As such the yearbook offers a unique opportunity for STAT to fill the need of various users of statistics, in one compact and user-friendly consortium. A sincere thank you to all contributors who took the time out to provide updates to STAT and we look forward to partnering with you on future editions.

Comments and/or queries are always welcomed and can be sent to: statinfo@sintmaartnegov.org

Visit us at www.stat.gov.sx for more statistical information.

Makini Persaud-Hickinson
Department Head





CONTENTS

PREFACE	3
ABOUT ST. MAARTEN	6
1. AREA	7
2. CLIMATE	8
3. POPULATION	16
4. HOUSING	22
5. POLITICS	27
6. PUBLIC HEALTH	29
7. EDUCATION	38
8. LABOUR	44
9. ESTABLISHMENTS & ENTERPRISES	53
10. TOURISM	55
11. UTILITIES	58
12. TRANSPORT AND COMMUNICATION	59
13. NATIONAL ACCOUNTS	64
14. PRICES	68
15. JUSTICE AND SECURITY	72

ABOUT ST. MAARTEN

St. Maarten, located at 18°01 N 63°03 W, is one of the southern islands of the Lesser Antilles, within the archipelago of the West Indies. Its closest neighbouring islands include Anguilla, St. Barths, Saba, St. Eustatius, St. Kitts and Nevis; and it is situated some 200 miles East of Puerto Rico.

St. Maarten/St. Martin is partly Dutch (southern-side) and French (northern-side). After being part of the Netherlands Antilles for over 50 years, Dutch St. Maarten became a constituent country within the Kingdom of the Netherlands on October 10th 2010, essentially becoming a constitutionally equal partner with Aruba, Curaçao, and the Netherlands.

St. Maarten now has its own government and parliament. The Kingdom Government remains responsible for defence and foreign affairs. The King of the Netherlands is Head of State and is represented locally by the Governor.

Dutch and English are the official languages on St. Maarten.

St. Maarten is a small, open-island economy, driven primarily by the tourism industry. Each year well over 2 million tourists visit the island.

The tourism industry accounts for the greatest contribution to the island's Gross Domestic Product and employment. Apart from the mainstay industry (stay-over & cruise tourism sectors), the Marine & Yachting segment have gained significant momentum, while other sectors such as renewable energy are being explored.

The Netherlands Antillean guilder is still used on St. Maarten, and the US dollar is widely accepted at a rate of US\$1=ANG1.80.

The 37-square-mile island of St. Maarten was first settled by the Arawaks and was discovered by

Christopher Columbus on behalf of Spain in 1493. Columbus sighted the island on November 11th, the holy day of St. Martin of Tours, and so named the island after him. For the next 150 years the island was passed between Holland, England, France and Spain.

The old stone forts that guard many of the island's inlets are proof of the island's turbulent past. In 1648 St. Maarten was peacefully divided between Holland and France, and today is the smallest landmass in the world to be shared by two sovereign nations.





1. AREA

1.1 AREA, POPULATION DENSITY AND CAPITAL

	Area in Square kilometres	Population Density, per Square kilometres ¹	Capital
St. Maarten	34	1192	Philipsburg

Source: Office of Land Registry, Civil Registry Department and STAT
¹January 2017





2. CLIMATE

St. Maarten is characterized by a marine climate. There is a relatively dry season from January until April and a rainy season from August until December, with moderate to fresh east to north easterlies. The island enjoys a mild tropical climate, with average temperatures of around 27 °C or 81 Fahrenheit. In 2016, August was the warmest month and March was the coolest month on the island. Moreover, the rainiest month during 2016 was December.

The seawater temperature around the island averages around 27.2 °C.

St. Maarten is located within the Atlantic hurricane belt; and on average experiences major- hurricane conditions at least once every 4 – 5 years. The 2016 Atlantic hurricane season was an above average season and the most active since 2012 producing a total of 15 named storms, 7 hurricanes and 4 major hurricanes. The data observed in tables 2.1 – 2.4 have been collected at the Princess Juliana International Airport. Values for the years 2010-2016 were received from the Meteorological Department St. Maarten, whereas the historical observation series is that of the Meteorological Service of the former Netherlands Antilles.

The following tables can be found in this section:

- *Monthly temperatures and precipitation*
- *Cloud coverage and duration of sunshine*
- *Wind, air pressure and relative humidity*



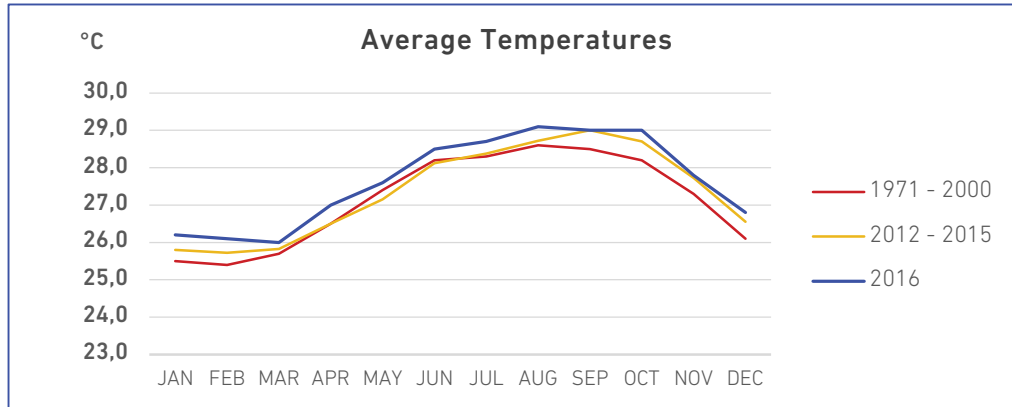
2.1 TEMPERATURE IN DEGREES CENTIGRADE

Princess Juliana International Airport

	JAN	FEB	MAR	APR	MAY	JUN	JUL	AUG	SEP	OCT	NOV	DEC	YEAR
Average temperature 1)													
1971-2000 ²	25.5	25.4	25.7	26.5	27.4	28.2	28.3	28.6	28.5	28.2	27.3	26.1	27.2
2012	25.4	25.5	25.5	26.4	27.0	28.4	28.4	28.7	29.0	28.3	28.0	26.5	27.3
2013	25.7	25.5	25.8	26.6	27.2	28.0	28.4	28.9	29.1	28.8	27.4	26.4	27.3
2014	25.9	25.6	26.0	26.4	26.8	27.9	28.3	28.6	28.8	28.6	27.7	26.4	27.3
2015	26.2	26.3	26.0	26.6	27.6	28.2	28.4	28.7	29.1	29.1	27.8	26.9	27.6
2016	26.2	26.1	26.0	27.0	27.6	28.5	28.7	29.1	29.0	29.0	27.8	26.8	27.7
Absolute maximum temperature													
1971-2000 ²													
2012	28.9	29.0	29.0	29.4	30.5	31.8	31.7	32.0	32.7	31.9	31.5	30.0	32.7
2013	29.3	29.1	30.5	30.9	31.0	31.8	32.5	32.8	32.7	32.6	32.7	30.2	32.8
2014	28.8	28.8	30.2	30.0	30.5	31.7	31.6	32.7	32.4	32.7	31.1	30.2	32.7
2015	29.5	29.5	29.6	31.0	30.7	31.2	31.6	32.4	32.8	32.7	31.2	29.9	32.8
2016	29.3	29.3	29.5	30.4	30.9	31.7	31.9	32.8	32.8	32.4	31.2	31.1	32.8
Absolute minimum temperature													
1971-2000 ²	18.6	19.2	19.5	19.3	20.2	22.3	22.1	21.4	22.0	22.1	21.2	20.0	18.6
2012	20.8	22.0	22.1	22.7	21.7	25.4	23.0	23.6	25.3	23.5	24.2	22.6	20.8
2013	21.6	20.9	21.4	23.3	22.8	24.1	22.8	23.9	23.8	22.8	23.5	20.3	20.3
2014	21.3	22.1	22.5	22.3	21.2	23.8	23.7	24.0	23.8	23.1	22.1	22.2	21.2
2015	21.7	23.1	22.7	22.1	22.8	24.7	23.9	23.5	25.4	23.1	23.5	22.6	21.7
2016	22.5	22.3	21.7	22.9	22.7	25.0	23.6	24.5	23.6	24.8	22.2	21.8	21.7

Source: Meteorological Dept. St. Maarten

1) Average of daily 24 hourly observations; 2) Climatologically standard period, as available



2.2 PRECIPITATION

Princess Juliana International Airport

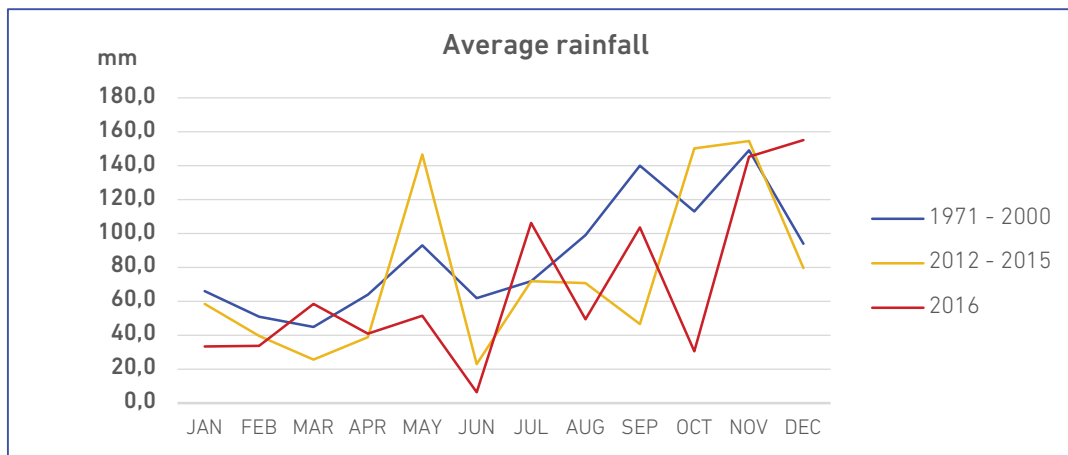
	JAN	FEB	MAR	APR	MAY	JUN	JUL	AUG	SEP	OCT	NOV	DEC	YEAR
Total monthly rainfall (in mm)													
1971-2000 ²	66.0	51.0	45.0	64.0	93.0	62.0	72.0	99.0	140.0	113.0	149.0	94.0	1047.0
2012	70.0	41.9	63.8	41.6	217.8	3.1	132.0	64.2	37.1	220.0	59.0	30.5	981.0
2013	58.5	25.1	19.3	30.0	165.9	44.3	101.2	80.2	57.7	93.4	124.9	167.2	967.7
2014	65.9	66.0	10.1	52.3	175.1	22.1	46.4	77.6	65.5	211.5	327.8	60.5	1180.8
2015	39.5	25.6	9.5	31.8	27.8	22.9	8.4	61.4	26.4	75.6	106.1	60.4	495.4
2016	33.4	34.9	58.6	40.9	51.6	6.4	106.3	49.5	103.6	30.6	145.3	155.5	816.6
Maximum precipitation in one day													
1971-2000 ²	41	76	43	101	118	110	65	90	258	122	254	123	258
2012	12.0	7.2	16.2	16.4	118.8	2.1	28.2	16.8	17.8	57.0	13.2	11.4	118.8
2013	7.4	4.0	4.3	6.7	33.4	14.1	18.1	16.1	19.3	37.2	41.3	47.0	47.0
2014	13.7	9.0	2.3	14.7	65.9	9.5	11.5	12.7	43.4	144.7	255.0	29.4	255.0
2015	6.6	4.2	3.2	15.2	9.6	5.9	2.0	11.0	12.6	37.2	13.3	17.9	15.2
2016	13.8	10.0	21.9	13.0	11.4	1.8	18.6	18.3	23.9	5.7	38.1	31.1	38.1
Number of rain days ²													
1971-2000 ²	12	9	9	12	10	8	12	14	14	14	15	13	142
2012	14	12	16	9	11	1	15	7	5	16	12	7	125
2013	19	10	6	6	13	12	17	13	9	15	13	18	151
2014	16	15	6	11	9	6	10	15	10	10	14	11	133
2015	10	9	3	7	5	9	4	15	4	12	19	15	112
2016	7	9	11	11	12	3	14	9	13	11	13	19	132

	JAN	FEB	MAR	APR	MAY	JUN	JUL	AUG	SEP	OCT	NOV	DEC	YEAR
--	-----	-----	-----	-----	-----	-----	-----	-----	-----	-----	-----	-----	------

Number of Heavy Rain Days (10.0+mm)

2013**	0	0	0	0	6	1	1	2	2	1	4	4	21
2014	1	0	0	2	3	0	1	2	1	3	2	2	17
2015	0	0	0	1	0	0	0	1	1	1	2	1	7
2016	1	1	1	2	1	0	5	1	4	0	5	5	26

Source: Meteorological Dept. St. Maarten
 1) Climatologically standard period, as available
 2) Days with 1.0mm or more precipitation
 3) Corrections made to figures for that year**



2.3 CLOUD COVERAGE AND DURATION OF SUNSHINE

Princess Juliana International Airport

	JAN	FEB	MAR	APR	MAY	JUN	JUL	AUG	SEP	OCT	NOV	DEC	YEAR
Average cloud coverage (in %) ¹													
1971-2000 ²	37	40	38	41	49	47	46	45	48	46	44	41	43
2012	44	40	53	54	64	45	56	59	54	57	48	43	51
2013	46	39	51	46	65	71	56	53	56	58	51	52	54
2014	41	44	37	43	52	60	53	52	50	44	52	45	48
2015	35	42	39	47	53	54	55	54	49	55	61	55	50
2016	42	40	49	56	63	63	56	51	51	61	65	44	53
Average daily duration of sunshine (in hours and minutes)													
1971-2000 ²	8:36	8:06	9:01	9:16	8:07	8:03	8:28	8:45	8:11	8:06	8:08	8:28	8:13
2012	8:22	9:00	8:42	9:08	7:58	8:37	8:42	7:37	8:22	8:00	8:34	8:31	8:27
2013	8:37	9:27	8:15	9:21	7:26	6:36	8:46	8:35	8:47	8:13	7:34	7:15	8:14
2014	9:00	8:54	9:36	9:31	7:44	7:47	8:53	8:13	9:00	9:16	8:14	8:00	8:40
2015	9:00	9:19	9:47	9:47	8:29	8:37	8:38	8:46	9:05	8:02	8:11	8:19	8:50
2016	8:14	8:56	8:37	7:22	7:34	8:02	8:20	9:20	8:15	8:12	6:30	8:15	8:08

Source: Meteorological Dept. St. Maarten
 1) Average of daily 24 hourly observations
 2) Climatologically standard period, as available

2.4 WIND, AIR PRESSURE & RELATIVE HUMIDITY

Princess Juliana International Airport

	JAN	FEB	MAR	APR	MAY	JUN	JUL	AUG	SEP	OCT	NOV	DEC	YEAR
Average wind speed (10 m/s) ¹													
1971-2000 ²	4.9	4.9	4.8	4.8	4.8	5.2	5.3	5	4.6	4.2	4.5	4.7	4.8
2012	4.8	4.5	4.6	4.3	4.2	4.3	5.2	4.9	3.2	3.9	3.6	4.7	4.4
2013	5.6	5.1	3.8	5.4	4.4	5.5	5.2	5.3	4.3	4.2	4.5	6.2	5.0
2014	5.7	5.7	4.1	4.6	4.6	5.1	5.1	5.7	4.1	3.6	5.1	4.1	4.8
2015	4.6	5.1	5.7	4.6	4.6	5.1	5.7	5.1	3.6	3.6	4.6	5.7	4.8
2016	4.1	4.1	5.7	4.1	5.1	5.1	5.7	4.6	4.6	3.6	3.6	5.7	4.7
Maximum wind gust (in m/s)													
1971-2000 ²	20.4	20.9	19.9	20.9	20.9	23.0	35.7	28.6	50.5	44.4	45.9	25.5	50.5
2012	16.5	15.9	19.0	15.4	13.4	15.4	17.5	21.1	9.6	19.2	11.8	14.0	21.1
2013	13.9	12.3	12.2	15.1	11.3	12.6	15.5	11.9	19.0	18.0	16.5	21.6	21.6
2014	19.5	15.4	15.4	14.9	15.4	18.5	17.5	20.0	14.4	35.5	16.4	14.4	35.5
2015	18.0	15.9	16.4	14.4	16.4	15.9	17.0	23.6	17.5	14.4	14.9	17.0	23.6
2016	15.4	14.9	15.9	13.4	13.8	19.5	18.5	24.2	18.5	14.9	15.9	21.6	24.2
Average air pressure (in mb) ^{1,3}													
1971-2000 ²	1017	1017	1016	1016	1016	1017	1017	1016	1015	1014	1014	1016	1016
2012	1017	1017	1017	1015	1016	1017	1017	1016	1015	1012	1014	1015	1016
2013	1018	1017	1016	1017	1016	1017	1017	1015	1014	1014	1013	1017	1016
2014	1018	1017	1016	1017	1017	1017	1018	1016	1015	1014	1015	1016	1016
2015	1018	1017	1018	1017	1018	1018	1018	1016	1014	1014	1015	1018	1017
2016	1017	1017	1018	1015	1017	1018	1017	1016	1015	1012	1012	1017	1016

	JAN	FEB	MAR	APR	MAY	JUN	JUL	AUG	SEP	OCT	NOV	DEC	YEAR
Average relative humidity (in %) ¹													
1971-2000 ²	75	74	74	75	76	75	75	75	76	77	77	77	76
2012	71	71	72	73	77	73	74	74	74	76	73	69	73
2013	71	69	71	70	76	73	74	73	74	73	66	74	72
2014	72	72	70	71	73	73	72	74	73	74	76	74	73
2015	73	72	67	72	71	72	70	73	73	75	74	74	72
2016	73	75	73	77	78	75	77	77	78	80	83	79	77

Source: Meteorological Dept. St. Maarten

1) Average of daily 24 hourly observations

2) Climatologically standard period, as available

3) Atmospheric pressure reduced to Mean Sea Level (MSL)





3. POPULATION

Population figures on St. Maarten are compiled from both Population Censuses as well as from the population registry of the Civil Registry Department.

The most recent Population Census conducted on St. Maarten was in April 2011 by STAT, revealing a population of 33,609 residents; and prior to that in 2001 by the Central Bureau of Statistics (former Neth. Antilles).

In this section, an estimate is given of the population numbers as per the beginning of the year during the Population Census years as well the years in between; these are based on annual mutation files (i.e. number of births, deaths, registered immigration & emigration).

One of the main reasons for discrepancies in the population numbers between both sources, is the continuous lagging of persons in the population registry who have actually emigrated from the island but did not de-register from the system.

Special note should also be taken of the fact that the population estimates during the period 2002-2010 have been re-calculated and revised. This was done since the Population Census of 2011 showed that the estimates

of the preceding years were too high. As a result, the number of residents for the period 2002-2010 were updated.

The following tables can be found in this section:

- *Population and population change*
- *Population Pyramid*
- *Age distribution*
- *Vital statistics*
- *Life expectancy*
- *Immigration and emigration*



3.1 POPULATION OF SINT MAARTEN, JANUARY 1ST

	Inhabitants			Males per 100 females	Population growth	
	Total	Male	Female		Total	Growth (%) ¹
2000	30599	14989	15610	96.0		
2001	30440	14815	15625	94.8	-159	-0.52
2002	30760	14922	15838	94.2	320	1.05
2003	30795	14891	15904	93.6	35	0.11
2004	32163	15504	16660	93.1	1368	4.44
2005	32817	15770	17048	92.5	654	2.03
2006	33206	15908	17298	92.0	389	1.19
2007	33677	16085	17592	91.4	471	1.42
2008	33946	16166	17780	90.9	269	0.80
2009	33982	16136	17846	90.4	36	0.11
2010	34496	16333	18163	89.9	514	1.51
2011	33622	15893	17730	89.6	-874	-2.53
2012	33249	15651	17581	89.0	-373	-1.11
2013	36090	17661	18429	95.8	2841	8.54
2014	37132	18159	18973	95.7	1042	2.89
2015	38247	18694	19553	95.6	1115	3.00
2016	39410	19256	20155	95.5	1163	3.04
2017	40535	19769	20766	95.2	1125	2.85

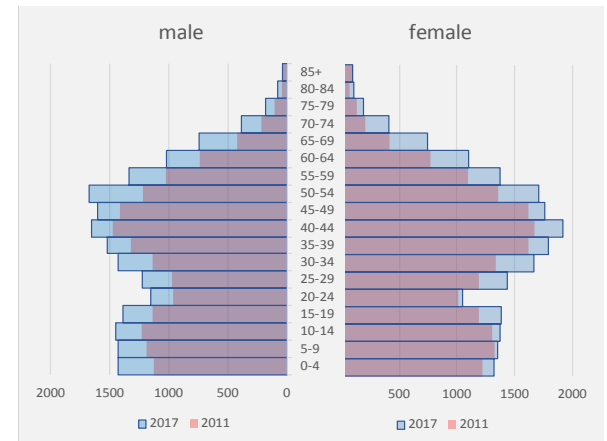
Source: Population Registry and CBS/STAT estimates

1) Annual exponential growth rate

2) 2002 - 2010 population estimates revised



Population Pyramid 2017 (absolute)



3.2 AGE DISTRIBUTION SINT MAARTEN, JANUARY 1ST

Age	2014			2015			2016			2017		
	Male	Female	Total	Male	Female	Total	Male	Female	Total	Male	Female	Total
00 - 04	1254	1190	2444	1352	1238	2591	1425	1281	2706	1433	1316	2748
05 - 09	1359	1276	2635	1367	1350	2718	1395	1354	2749	1427	1350	2777
10 - 14	1396	1327	2723	1433	1357	2790	1467	1335	2802	1453	1369	2822
15 - 19	1326	1238	2563	1314	1296	2610	1339	1359	2697	1394	1382	2776
20 - 24	1034	1091	2125	1067	1036	2103	1101	1055	2157	1159	1047	2206
25 - 29	1189	1303	2491	1234	1358	2592	1269	1406	2675	1225	1434	2660
30 - 34	1334	1552	2887	1337	1563	2900	1374	1624	2998	1434	1669	3104
35 - 39	1440	1707	3147	1467	1740	3207	1479	1734	3213	1521	1789	3310
40 - 44	1542	1745	3287	1549	1816	3365	1583	1870	3453	1660	1912	3572
45 - 49	1672	1680	3351	1663	1654	3317	1616	1708	3324	1605	1757	3362
50 - 54	1464	1537	3002	1534	1582	3116	1608	1635	3243	1675	1706	3382
55 - 59	1159	1210	2370	1211	1284	2495	1297	1320	2618	1337	1378	2714
60 - 64	923	940	1864	1001	1008	2009	1004	1067	2070	1021	1104	2124
65 - 69	559	554	1113	609	618	1227	691	696	1388	741	747	1488
70 - 74	272	278	550	302	295	597	342	347	689	390	412	802
75 - 79	149	150	298	156	171	327	173	175	348	178	186	364
80 - 84	48	89	136	60	86	146	58	95	152	84	109	193
85 and older	38	107	145	36	102	138	36	93	129	34	98	132
Total	18159	18973	37132	18694	19553	38247	19256	20155	39411	19769	20766	40535

Source: Population Registry and STAT estimates

3.3 POPULATION CHANGE SINT MAARTEN

	2014			2015			2016		
	M	F	Total	M	F	Total	M	F	Total
Live births	277	255	532	269	231	500	227	231	458
Deaths	99	70	169	117	80	197	108	52	160
Natural increase	178	185	363	152	151	303	119	179	298
Registered immigration	706	869	1,575	723	818	1,541	775	873	1,648
Registered emigration	350	474	824	314	367	681	381	441	822
Net registered migration	356	395	751	409	451	860	394	432	826
Total	535	580	1,115	562	602	1,164	513	611	1,125

Source: Population Registry

3.4 VITAL STATISTICS SINT MAARTEN

	2013	2014	2015	2016
Live births				
- per 1000 women aged 15-44 yrs	60	60	56	51
- number of boys per 100 girls	113			
- TFR (Total fertility rate)				
Deaths				
- per 1000 inhabitants	4.7	4.7	5.4	4.1
Nuptiality				
Marriages total	230	251		306
Marriages per 1000 inhabitants	6.4	6.8		7.8
Divorces	99	108		89

Source: Population Registry and STAT estimates





3.5 LIFE EXPECTANCY SINT MAARTEN, BY AGE AND SEX

Age	2011-2012		2013-2015		2014-2016	
	Male	Female	Male	Female	Male	Female
0	69.7	78.4	73.8	80.5	74.0	80.6
5	66.4	73.5	69.6	76.3	69.9	76.8
10	61.5	68.7	64.6	71.3	65.0	71.8
15	56.7	63.9	59.6	66.4	60.1	67.0
20	51.9	59.1	54.6	61.4	55.2	62.0
25	47.8	54.1	50.4	56.6	50.7	57.0
30	43.4	49.3	46.2	51.8	46.4	52.2
35	39.2	44.4	41.6	47.0	41.9	47.3
40	34.9	39.5	37.0	42.3	37.3	42.5
45	30.5	34.9	32.2	37.5	32.5	37.7
50	26.3	30.0	27.6	32.7	28.1	32.9
55	22.1	25.4	23.2	28.2	23.9	28.2
60	18.6	20.8	19.1	23.7	19.8	23.8
65	14.9	16.3	15.3	19.4	16.2	19.4
70	11.5	13.1	11.6	15.5	12.6	15.2
75	8.5	9.9	8.7	12.3	10.0	12.0
80	6.4	7.4	6.3	9.4	7.6	9.1
85	4.7	5.6	5.4	8.3	6.3	7.2
90+			5.9	6.2	7.2	5.5

*Life expectancies calculated by raw abridged life tables
**2011-2012 life tables corrected since previous publications*

3.6 IMMIGRATION BY MAJOR SENDING COUNTRIES

Registered immigration¹

	2016
Total	1635
Netherlands	309
BES	43
Guadeloupe	6
Aruba	26
USA	128
Dominican Republic	225
Jamaica	132
Guyana	62
Haiti	57
Curacao	83
Dominica	22
Suriname	48
China	56
India	41

Source: Population Registry

1) Excluding administrative corrections

3.7 EMIGRATION BY MAJOR RECEIVING COUNTRIES

Registered immigration¹

	2016
Total	818
Netherlands	448
BES	47
Aruba	38
Curacao	97
USA	41
India	14
Guadeloupe	1

Source: Population Registry

Emigration is likely to be underestimated due to under registration of emigration

1) Excluding administrative corrections



4. HOUSING

Housing statistics presented in this section have been compiled from the Ministry of Public Housing, Spatial Planning, Environment & Infrastructure (VROMI) and are also based on the Living accommodations results of the 2011 Population Census.

The following tables can be found in this section:

- *Building Permits requested and issued*
- *Dwellings type and quality*
- *Living accommodations*
- *Amenities*
- *Monthly rent*





4.1 NUMBER OF BUILDING PERMITS

	2012	2013	2014	2015	2016
Requested					
Residential	220	189	165	149	129
Commercial	41	42	45	35	34
Demolishing	0	2	1	0	1
Other	30	29	41	35	42
Issued					
Residential	171	306	205	141	90
Commercial	48	75	97	41	42
Demolishing	21	10	3	1	0
Other	43	45	66	35	51

Source: Ministry of VROMI

4.2 DWELLINGS ON PROPERTY, ON LOAN AND RENTED

	2001	2011
Property		
on own land	2247	2551
on long lease land	1313	1396
on rented land	399	342
in a different matter		394
On loan without payment	138	102
Rented		
from a foundation	689	626
from a private owner, unfurnished	6809	6234
from a private owner, furnished		871
Other		228

Source: STAT/CBS Population Census

4.3 DWELLINGS BY BUILDING PERIOD AND QUALITY, 2011

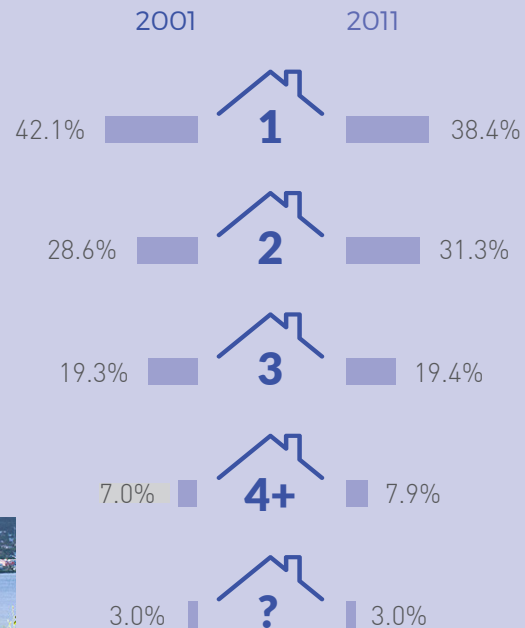
(In percentages)

	Appropriate	Bad	Very bad	Not reported	Total
before 1950	0.87	0.13	0.03	0.02	1.00
1950 - 1959	0.82	0.12	0.01	0.01	1.00
1960 - 1969	2.76	0.36	0.06	0.08	3.30
1970 - 1979	8.17	0.66	0.15	0.33	9.30
1980 - 1989	14.02	1.21	0.19	0.33	15.80
1990 - 1999	19.93	1.28	0.15	0.60	21.90
2000 - 2009	10.57	0.48	0.18	0.26	11.50
2010 / 2011	1.29	0.04	0.02	0.13	1.50
Unknown	26.56	3.64	0.41	1.00	31.60
Not reported	1.38	0.11	0.05	1.61	3.20
Total	86.40	8.00	1.20	4.40	100.00

Source: STAT/CBS Population Census 2011



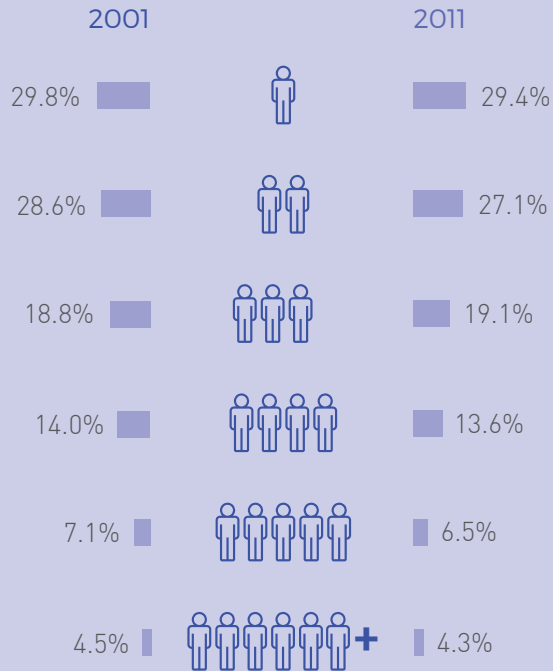
4.4 LIVING ACCOMMODATIONS BY NUMBER OF BEDROOMS



TOTAL: 100%

Source: STAT/CBS Population Census

4.5 LIVING ACCOMMODATIONS BY NUMBER OF PERSONS



TOTAL: 100%

Source: STAT/CBS Population Census

4.6 LIVING ACCOMMODATIONS BY TYPE OF WATER SUPPLY

(In percentages)

Type of water supply	2001	2011
water distribution	88.8	83.5
cistern/groundwater	2.4	7.4
combination of 1 and 2	5.3	
pails/water distribution truck	2.2	0.5
bottles of water		7.8
other/unknown	1.3	0.8
Total	100.0	100.0

Source: STAT/CBS

4.7 LIVING ACCOMMODATIONS BY TYPE OF ELECTRICITY SUPPLY

(In percentages)

Type of electricity supply	2001	2011
distribution system	97.2	96.6
own generation	0.5	2.0
combination of 1 and 2	0.6	
none/unknown	1.7	1.0
solar energy / wind energy		0.4
Total	100.0	100.0

Source: STAT/CBS

4.8 HOUSEHOLDS WITH SELECT AMENITIES

% of households with:

	2001	2011
refrigerator	96.0	95.2
deep freezer	14.0	25.2
washing machine	76.0	86.8
telephone	44.0	25.2
mobile phone		95.2
tv	92.0	89.8
video recorder	60.0	
cable tv/blackbox	69.0	71.0
personal computer / laptop	25.0	56.4
internet connection	15.0	46.6
internet connection via mobile phone		25.0
internet connection via laptop or pc (3G)		23.2
air-conditioning	22.0	44.1

Source: STAT/CBS Population Census

4.9 RENTED LIVING ACCOMMODATIONS BY MONTHLY RENT

(In percentages)

monthly rent (in Ang.)	2001	2011
001 - 149	4.2	1.9
150 - 299	20.2	6.3
300 - 499	24.8	20.4
500 - 699	16.6	18.5
700 - 1199	20.3	32.2
1200 - 1999	6.0	12.5
2000 and more	3.4	3.9
unknown	4.5	4.3
Total	100.0	100.0

Source: STAT/CBS Population Census





5. POLITICS

Sint Maarten has its own government and parliament. Together, these institutions are empowered to enact legislation in regard to the countries' own affairs. As of October 10, 2010, St. Maarten is governed by its own Constitution and the following institutions of government: Governor as Head of State, Parliament and the Council of Ministers headed by the Prime Minister.

The parliament is the highest legislative body of country St. Maarten and represents the entire population of the Dutch side of the island. The most recent parliamentary elections were held on September 26th 2016, where 15 members were elected for the next four-year period.

The council of ministers comprises of seven ministers. The ministers are answerable to the parliament. The prime minister chairs the council of ministers. The council of ministers shall debate and determine government policy in order to promote the cohesion of that policy.

The following tables can be found in this section:

- *Election results 2016*





5.1 ELECTION RESULTS

Election: September 26 2016

	2014	2016
Eligible Voters	21,439	22,302
Cast Votes	14,827	14,596
Number of Valid Votes	14,556	14,211
Blanc Votes	80	-
Invalid Votes	191	385

Source: Main Voting Bureau St. Maarten

5.2 ELECTION RESULTS PER PARTY

	2014		2016	
	Votes	Seats	Votes	Seats
Party:				
US	1647	2	2784	3
NA	4055	4	3778	5
UP	6211	7	4130	5
DP	2342	2	1813	2
SRP	132	0	n/a	n/a
OSPP	169	0	203	0
SDM	n/a	n/a	346	0
SMCP	n/a	n/a	848	0
HOPE	n/a	n/a	75	0
PPA	n/a	n/a	234	0

Source: Main Voting Bureau St. Maarten



6. PUBLIC HEALTH

Health statistics presented in this section have been compiled from the Ministry of Public Health, the St. Maarten Medical Centre and the 'How healthy is Sint Maarten Saint Martin' survey conducted by the University of the Virgin Islands and the University of St. Maarten in August 2015. Important to mention that this was a sample survey.

Statistics on Fire Services have also been included.

The following tables can be found in this section:

- *Reported syndromes and communicable diseases*
- *Number of doctors and nurses*
- *Number of pharmacies and pharmacists*
- *Number of HIV- infected*
- *Perception of health*
- *Disabilities*
- *Insurance types*
- *Fire and technical assistance calls*





6.1 REPORTED SYNDROMES

	2012	2013	2014	2015
Fever & Respiratory	816	888	851	843
Undifferentiated fever < 5 Years	11	28	31	30
Undifferentiated fever ≥ 5 Years	29	137	179	149
Fever & Hemorrhagic symptoms	0	1	3	0
Fever & Neurological Symptoms	0	0	0	0
Gastroenteritis < 5 Years	241	310	207	242
Gastroenteritis ≥ 5 Years	327	418	346	358
Rash & Fever	76	13	55	13
Acute Flaccid Paralysis	0	0	0	0

Source: Ministry of Public Health

6.2 REPORTED COMMUNICABLE DISEASES

	2012	2013	2014	2015
Dengue	38	316	24	137
Hepatitis B	2	2		0
Legionellosis	1	3	3	2
Listeriosis	0	0		0
Measles	0	0		0
Salmonellosis	1	4	1	1
Shigella	0	0		0
Tuberculosis	1	2	7	2
Malaria	1	0		0
Mycobacterium Kansasii disease	0			0
Chicken Pox	2	8		13

Source: Ministry of Public Health

6.3 PREVALENT DISEASES OR CONDITIONS

Diseases	Percent n=1018 (2)	Percent Medically Diagnosed n=75 (3)	Recent Illness (past 12 m) n=76	Treated or Medicated in last 2 weeks n= 76
Asthma	7.5	90.7	47.4	32.9
Lung Disease	1.3	92.3	50.0	25.0
Heart Attack	1.5	100.0	40.0	80.0
Consequences of heart attack	36.8	85.7	57.1	71.4
Other heart condition	3.0	96.8	77.4	67.7
High blood pressure	31.4	97.4	88.1	78.1
Stroke	2.4	100.0	64.0	68.0
Rheumatoid arthritis	8.4	77.4	81.0	35.4
Osteoarthritis	6.3	78.1	78.1	40.3
Hernia	10.3	84.8	61.9	29.5
Diabetes	13.5	97.8	94.9	92.0
Diabetes-related complications	17.9	100.0	79.2	54.2
Allergies	19.1	71.5	61.7	31.6
Gastrointestinal disorder	11.3	87.0	67.8	39.1
Liver diseases	0.9	100.0	44.4	33.3
High cholesterol	15.5	96.1	67.6	44.7
Cancer	2.1	95.2	42.9	38.1
Migraine	14.4	68.8	63.4	26.9
Chronic depression	5.9	54.2	52.5	12.1
Other psychological problems	1.2	75.0	50.0	33.3
Cataract	13.7	95.7	41.7	20.1
Glaucoma	3.1	96.8	77.4	71.0
Kidney stones	3.1	100.0	48.4	25.8

Diseases	Percent n=1018 (2)	Percent Medically Diagnosed n=75 (3)	Recent Illness (past 12 m) n=76	Treated or Medicated in last 2 weeks n= 76
Kidney disease	1.2	90.9	50.0	16.7
Gall stones	4.2	97.7	18.6	7.0
Porous bones	0.5	80.0	100.0	20.0
Dengue or dengue-like symptoms	8.8	80.7	18.2	6.8
Chikungunya or chikungunya-like symptoms	11.6	80.9	26.7	8.7
Sexually transmitted diseases	1.9	89.5	15.8	15.8
Sickle cell disease or carrier	1.9	94.7	63.2	21.1
Epilepsy	0.5	100.0	60.0	60.0
Skin problems	10.6	89.6	31.8	14.3
Thyroid problems	4.0	97.6	65.0	56.1
Nervous system disease	0.4	100.0	100.0	75.0
Infertility/sterility	2.2	92.3	30.8	15.4
Gynecological problems	20.7	100.0	28.3	11.7
Menstruation problems	16.3	84.2	55.8	24.2
Prostate	6.1	96.2	92.3	65.4
Erectile dysfunction	5.1	47.6	85.7	20.0

Each number in column (2) is the percent of persons with the disease or condition. Column (3) is the percentage with the disease or condition who was medically diagnosed
Source: 'How healthy is Sint Maarten Saint Martin' survey 2015

6.4 DOCTORS REGISTERED BY THEIR SPECIALIZATION

per October 2017

Anesthesiologist	1	Nutritionist	-
Cardiologist	8	Oncologist	1
Child Health Specialist	-	Orthodontist	1
Dentist	13	Orthopedic Surgeon	-
Dental hygienist		Pediatrician	3
Dietician	4	Physical therapist	20
Dermatologist	2	Physician	28
Ergo therapist	2	Psychiatrist	4
Ear-, Nose- and Throat Physician*	2	Psychologist	11
Eye Specialist	1	Radiologist	1
Emergency Room Doctors	10	Speech therapist	3
General Surgeon	3	Urologist	1
Gynecologists - Obstetrician	4	Epidemiologist	-
Internist	6	Mid Wife	2
Microbiologist	2	Hearing Aid Specialist	2

Source: Ministry of Public Health // * one visiting specialist

6.5 PHARMACIES AND PHARMACISTS

	2012	2013	2014	2015	2016	2017
Pharmacies	12	12	12	12	12	12
Pharmacists	14	13	13	14	18	18

Source: Ministry of Public Health

6.6 NURSING PERSONNEL

per December

	2013	2014	2015
Nursing Personnel by level:			
Registered nurses	45	40	115
Licensed Practical nurses	17	17	30
Nursing assistants	5	5	8
Midwives	2	1	1

Source: St. Maarten Medical Center



6.7 NEW REGISTERED NUMBER OF KNOWN HIV-POSITIVES

(per year of diagnosis)

1996	32	2006	34
1997	27	2007	29
1998	21	2008	37
1999	20	2009	26
2000	17	2010	21
2001	14	2011	18
2002	25	2012	19
2003	18	2013	-
2004	28	2014	21
2005	38	2015	26



Source: Epidemiology & Research Unit

6.9 POPULATION BY PERCEPTION OF HEALTH

	2001	2011
Very good	12409	15387
Good	14955	13553
Reasonable	2863	3118
Bad/Very bad	327	413
Unknown	40	1138
Total	30594	33609

Source: STAT/CBS Population Census

6.8 NEWLY KNOWN HIV-INFECTED BY AGE AND GENDER

	2011	
	AGE GROUP	
		
0	<1	0
0	1-4	0
2	20-24	2
0	25-29	2
0	35-39	2
3	40-44	1
1	45-49	0
0	50-54	1
2	55-59	0
2	60-64	0
<hr/>		
TOTAL:	10	8

Source: Epidemiology & Research Unit





6.10 POPULATION BY TYPE OF INSURANCE

	2001	2011
SVB/SZV	11899	21799
BZV	2171	
ZOG	541	320
Insurance by employer	944	559
Private insurance	3412	4897
Other type of insurance	1234	
Not insured	9238	4121
Don't know		1373
Total	30594	33609

Source: STAT/CBS Population Census

6.11 POPULATION BY TYPE OF DISABILITY

	2001	2011
Blindness	21	31
Impaired sight	773	2370
Deafness	22	7
Impaired hearing	79	80
Physical	276	56
Cannot talk		12
Cannot use one or both arms		29
Cannot use one or both legs		85
Mental	28	61
Other	175	
Multiple	151	1112
Total	1525	3843

Source: STAT/CBS Population Census

6.12 POPULATION BY MOST COMMON DISEASES

	2001	2011
High blood pressure	1223	2359
Diabetes		
Glaucoma	767	777
Asthma Chronic Bronchitis	132	121
Heart problem	553	722
Consequence heart attack	224	64
Kidney problem	27	6
Cancer	93	21
Sickle cell	-	42
Other	-	95
Multiple	-	290
Total	3019	5911

Source: STAT/CBS Population Census

6.13 FIRE ASSISTANCE CALLS

	2012	2013	2014	2015	2016
Total calls	169	144	176	160	154
Of which:					
Boat fire	1	1	0	1	3
Bush fire	53	50	49	57	33
Car fire	29	23	26	29	29
Electrical fire	22	20	13	14	16
False alarm	10	1	-	-	-
Garbage fire	37	21	26	23	31
Generator fire	2	6	2	4	4
House fire	11	10	21	12	15
Building fire	4	12	15	8	13
Container Fire	-	-	2	1	2
Aircraft	-	-	1	4	4
Smoke Fire	-	-	21	7	4

Source: Sint Maarten Fire Department



6.14 TECHNICAL ASSISTANCE CALLS

	2012	2013	2014	2015	2016
Total calls	135	104	107	112	109
Of which:					
Aircraft Code Red	0	1	0	0	0
Bees nest	0	0	0	0	0
Car accident	7	2	8	3	3
Clean road	70	58	55	58	52
Cut lock	5	0	1	1	4
Cut tree	14	10	7	4	4
Elevators	10	0	0	0	0
Give light	2	2	3	3	3
Hazardous materials	2	4	7	4	4
Leaking gas cylinder	7	6	5	15	20
Pump water	5	5	0	0	0
Rescue Animals	5	6	2	3	6
Rescue Persons	0	8	2	2	2
Stand by	3	0			
Water pollution	0	0	1	1	1
Wet ground	5	2	1	3	3
Vehicle Extraction			2	4	2
Service			13	11	5

	2012	2013	2014	2015	2016
Fire & Technical Calls by size					
Small incident	265	221	260	241	240
Medium incident	25	12	13	20	15
Large incident	4	4	1	4	3
False alarm	10	13	9	7	5

Source: Sint Maarten Fire Department





7. EDUCATION

The educational system in Sint Maarten comprises of Public, Government subsidized and Private schools. The information presented in this section is compiled from the Department of Education and covers the first two categories.

Some schools have adopted the Dutch school system while others maintain the American system. Comparing grades consistently is therefore a challenge.

The following tables can be found in this section:

- *School population*
- *Schools per school board*
- *Number of teachers*
- *University of Sint Maarten graduates*



7.1 SCHOOL POPULATION

per December

			2012	2013	2014	2015	2016
FAVE	Foundation for Academic and Vocational Education	St. Maarten Academy School (PBL, PKL & CXC)	991	958	951	963	871
	CAPE				28	39	43
MAC	Methodist Agogic Center	Rev. John A. Gumbs Campus	416	410	400	393	400
MAC	Methodist Agogic Center	Browlia F. Maillard Campus	433	425	411	405	412
MAC	MAC Comprehensive			38	88	125	159
DPES	Public Education	Charles Leopold Bell Primary School	151	153	164		
DPES	Public Education	Dr. Martin Luther King Jr	243	236	202	198	204
DPES	Public Education	Genevieve de Weever	313	284	266	299	273
DPES	Public Education	Leonard Connor School	248	238	217	310	290
DPES	Public Education	Oranje School	358	347	336	344	325
DPES	Public Education	Prins Willem Alexander School	77	66	52	52	47
DPES	Public Education	Ruby Labega School	201	199	189	177	142
DPES	Public Education	St Maarten Vocational School	216	234	248	249	269
SPCOBE	Foundation for Protestant Christian Education	Hillside Christian School	693	712	706	704	698
SDA	Foundation Of Seventh Day Adventist	Seventh Day Adventist School	304	297	318	350	351
SKOS	Stichting Katholiek Onderwijs St. Maarten	Sr Borgia School	203	207	210	214	210
SKOS	Stichting Katholiek Onderwijs St.Maarten	Sr. Magda School	362	386	408	404	411
SKOS	Stichting Katholiek Onderwijs St. Maarten	Sr. Marie Laurence School	189	194	190	185	186
SKOS	Stichting Katholiek Onderwijs St.Maarten	Sr. Regina School	184	223	229	226	229
SKOS	Stichting Katholiek Onderwijs St.Maarten	St. Dominic High School	374	356	336	309	306

per December

			2012	2013	2014	2015	2016
SKOS	Stichting Katholiek Onderwijs St.Maarten	St. Dominic High School (IB)				37	31
SKOS	Stichting Katholiek Onderwijs St.Maarten	St. Dominic Basisschool	226	244	270	294	316
SKOS	Stichting Katholiek Onderwijs St.Maarten	St. Joseph School	195	204	216	220	205
SVOBE	Stichting Voortgezet Onderwijs St. Maarten	Milton Peters College	999	956	898	872	864
SVOBE	Stichting Voortgezet Onderwijs St. Maarten	Sundial School	318	339	344	321	298
CBA	Charlotte Brookson Academy		36	76	115	127	115
	Victory Christian Academy				23	-	-
AVE	NIPA				288	246	245
Total			7730	7782	8103	8063	7900

Source: Department of Education



7.2 TOTAL SCHOOLS PER SCHOOL BOARD

		Foundation Based Education Aged Children (Special Basis Onderwijs)	Foundation Based Education (FO)	HAVO/VWO	Labour Market Oriented Education (VSB0 AGO)	CAPE	International Baccalaureate (IB)	Preparatory Secondary Vocational Education (VSB0)	Secondary Vocational Education (SB0)	Caribbean Certificate of Secondary Competence (CCSLC)	Caribbean Examinations Council (secondary)	Total
FAVE	Foundation for Academic and Vocational Education					1		1			1	3
MAC	Methodist Agogic Center		2									2
DPES	Public Education	1	6		1					1		9
SPCOBE	Foundation for Protestant Christian Education		2									2
SDA	Foundation Of Seventh Day Adventist		1									1
SKOS	Stichting Katholiek Onderwijs St.Maarten		6				1				1	8
SVOBE	Stichting Voortgezet Onderwijs St. Maarten			2				3		1		6
CBA	Charlotte Brookson Academy of the Performance Arts										1	1
MAC	MAC Comprehensive Secondary Education										1	1
Total		1	17	2	1	1	1	4	0	2	4	33

Source: Department of Education

7.3 NUMBER OF TEACHERS

per December

	2012-13	2013-14	2014-15
Primary schools	317	341	393
Secondary schools*	333	355	335

Source: Department of Education

* some teachers functioning at multiple schools

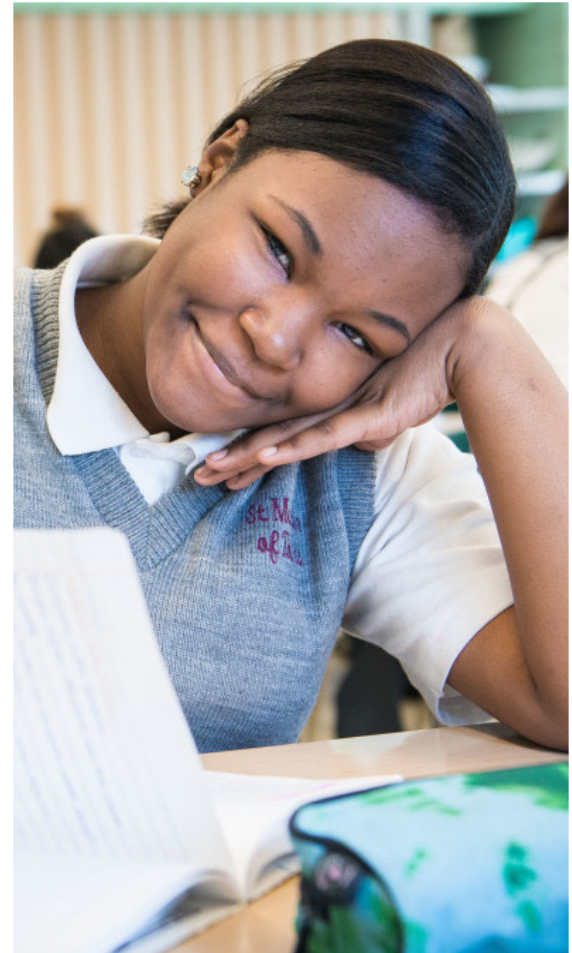


7.4 UNIVERSITY OF SINT MAARTEN GRADUATES

	2012	2013	2014	2015	2016
A.A. General Liberal Arts Program	1	6	4	4	2
Male	1	2	0	0	1
Female	0	4	4	4	1
A.A. Business Program	18	9	16	19	11
Male	6	3	5	4	6
Female	12	6	11	15	5
B.A. Education Program	12	7	7	16	11
Male	0	0	0	0	1
Female	12	7	7	16	10
B.A. Education Program (TEP 2007 Fall)	5	6	7	0	0
Male	0	0	0	0	0
Female	5	0	7	0	0
BASc Accounting (2012 Fall-2016 Spring)	0	0	0	7	0
Male	0	0	0	0	0
Female	0	0	0	7	0
M.A. Education	0	1	0	0	0
Male	0	0	0	0	0
Female	0	1	0	0	0
BASC Business Administration (2012 Fall-2016 Spring)	0	0	0	5	3
Male	0	0	0	0	1
Female	0	0	0	5	2

	2012	2013	2014	2015	2016
B.S. Hospitality & Tourism Management	6	0	0	0	0
Male	2	0	0	0	0
Female	4	0	0	0	0
A.A.S. Business Information Management	3	2	3	4	1
Male	3	2	1	1	0
Female	0	0	2	3	1
A.A.S. Hospitality & Tourism Management	4	3	1	4	3
Male	1	0	1	0	0
Female	3	3	0	4	3
Total	44	28	31	59	31
Male	13	7	7	5	9
Female	31	21	24	54	22

Source: Department of Education





8. LABOUR

Labour market data for St. Maarten presented in this section is derived mainly from Population Censuses and Labour Force Surveys (LFS). The LFS is a sample survey amongst households, with the aim to measure recent developments on the labour market. The most important concepts in this survey are the unemployment rate, developments in the employed and unemployed population, and the degree of participation.

The last LFS was conducted during the months of January to March 2017 by STAT. The following table provides the definitions for some key terms in this section.

Employed population	All persons 15 years and older with a job or their own business or who during the week prior to the survey, worked 4 hours or more for a remuneration.
Unemployed Population	All persons 15 years and older who during the survey were unemployed, were actively looking for work the month prior to the survey and who can start working within 2 weeks, should there be a job available.
Labour Force (Economically active population)	The number of employed and unemployed added together.
Economically not active	All persons 15 years and older who are neither employed nor unemployed.
Unemployment rate	The number of unemployed divided by the labour force multiplied by 100.
Youth unemployment rate	The unemployment rate of persons in the age group 15 to 24.
Participation rate	The labour force divided by the total population multiplied by 100. It indicates what proportion of the total population is economically active.

The following tables can be found in this section:

- *Labour force*
- *Employed and unemployed population*
 - *by top ten industries, by occupation group and gender, by employment status, by highest level of education completed*
- *Economic status and unemployment rate by districts*
- *Gross monthly income*
- *Minimum wage*



8.1 LABOUR FORCE

	2007	2009	2011	2013	2017
1. Employed population	20720	21378	17108	19137	20954
2. Unemployed population	2446	2966	2229	1934	1388
3. Economically active population	23166	24344	19337	21071	22342
4. Unemployment rate (2/3 x 100) (%)	10.6	12.2	11.5	9.2	6.2
5. Youth unemployment rate	26.0	29.4	27.7	25.9	23.8
6. Total population ¹⁾	39011	40898	33609	36175	40535
7. Participation rate (3/6 x 100) (%)	59.4	59.5	57.5	58.2	55.1

Source: STAT/CBS Labour Force Survey

1) Inter-censal estimates, excludes population in institutions

2) Population Census Figures

8.2 LABOUR FORCE BY GENDER

	2011 ²			2013			2017		
	Male	Female	Total	Male	Female	Total	Male	Female	Total
1. Employed population	8661	8428	17108	9729	9408	19137	10350	10605	20954
2. Unemployed population	978	1250	2228	1068	866	1934	588	800	1388
3. Economically active population	9639	9678	19336	10797	10274	21071	10938	11405	22342
4. Unemployment rate (2/3 x 100)(%)	10.1	12.9	11.5	9.9	8.4	9.2	5.4	7.0	6.2
5. Total population ¹	15868	17741	33609	17661	18429	36175	19769	20766	40535
6. Participation rate (3/5x100)(%)	60.9	54.6	57.5	78.1	69.7	58.2	55.3	54.9	55.1

Source: STAT/CBS Labour Force Survey

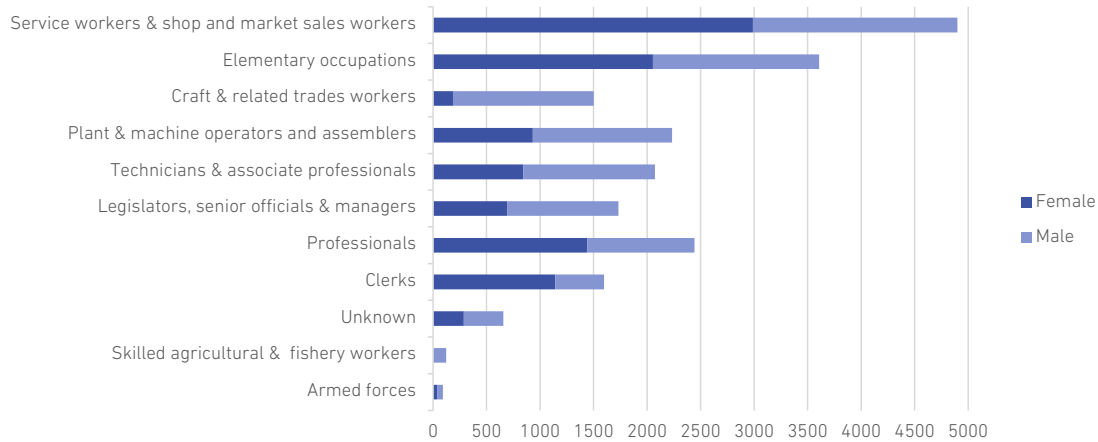
1) Inter-censal estimates, excludes population in institutions

2) Population Census Figures

8.3 EMPLOYED POPULATION BY TOP 10 INDUSTRIES

	2017
Retail of Other Goods (excludes food, vehicles, clothing and footwear)	1913
Hotels and Restaurants	1806
Public Administration and Defense	1548
Restaurants and Catering	1554
Education	1530
Construction (including plumbing and machinery equipment installation)	1495
Transportation and Storage Services (including postage and courier activities)	1478
Rental and Leasing Activities, Security and Investigation Activities	954
Health, Care and Social Activities (including day care and residential care services)	846
Wholesale and Retail - Supermarkets and Food Products, Beverages and Tobacco	836

8.4 EMPLOYED POPULATION BY OCCUPATION GROUP AND GENDER



8.5 EMPLOYED POPULATION BY EMPLOYMENT STATUS AND GENDER

	2011			2013			2017		
	Male	Female	Total	Male	Female	Total	Male	Female	Total
Employer/Own account worker	1663	162	1825	1007	441	1448	1709	1061	2770
Permanent service	5027	5633	10660	6002	6359	12361	6051	6332	12383
Temporary service	1289	1545	2834	1634	1673	3307	1765	2206	3971
Casual jobs	417	256	673	797	602	1399	513	611	1124
Other	101	112	213	95	190	285	95	91	186
Unknown	182	158	340	194	143	337	217	302	519
Total	8680	8428	17108	9729	9408	19137	10350	10605	20954

Source: STAT/CBS

8.6 EMPLOYED POPULATION BY HIGHEST LEVEL OF EDUCATION COMPLETED

	2017
Special Education	18
Elementary	4596
Secondary 1	3164
Secondary 2	5156
Post-Secondary / Non-Tertiary	3503
Tertiary 1	2847
Tertiary 2 (Masters/Doctorandus)	639
Tertiary 2 (PHD/Doctor)	121
None	910
Total	20954

8.8 UNEMPLOYED POPULATION BY HIGHEST LEVEL OF EDUCATION COMPLETED

	2017
Elementary education	506
Secondary 1	358
Secondary 2nd stage +	298
Post-Secondary/Non-Tertiary	170
Tertiary 1	57
Total	1388

Source: STAT

8.7 UNEMPLOYED POPULATION BY AGE AND GENDER

	2011			2013			2017		
	Male	Female	Total	Male	Female	Total	Male	Female	Total
15 - 24 years	281	294	575	311	249	560	188	301	489
25 - 44 years	349	596	947	397	325	722	247	383	630
45 years and older	349	358	707	360	293	653	152	115	268
Total	978	1250	2229	1068	867	1935	588	800	1388

Source: STAT



8.9 LABOUR MARKET POSITION BY AGE AND GENDER 2017

	Male			Female			Total		
	15 - 24 yrs	25 - 44 yrs	45+ yrs	15 - 24 yrs	25 - 44 yrs	45+ yrs	15 - 24 yrs	25 - 44 yrs	45+ yrs
Total population (15 yrs +)	2,552	5,840	7,064	2,429	6,805	7,497	4,982	12,645	14,561
Employed labour force	791	4,460	5,099	772	5,253	4,580	1,563	9,712	9,679
Unemployed labour force	188	247	152	301	383	115	489	630	268
Not in the labour force	1,596	775	1,682	1,220	1,312	3,250	2,816	2,088	4,943
Not looking for work	1,577	739	1,589	1,277	1,452	2,991	2,854	2,191	4,579
<i>Reasons:</i>									
Retired	-	-	933	-	-	1,207	-	-	2,140
Completing study	657	18	-	507	39	-	1,164	94	-
Housewife	-	-	35	19	516	302	19	516	337
Health reasons	-	57	32	-	117	189	-	174	220
Other reasons	920	665	589	751	780	1,293	1,671	1,407	1,882

Source: STAT Labour Force Survey

8.10 ECONOMIC STATUS BY DISTRICT 2017

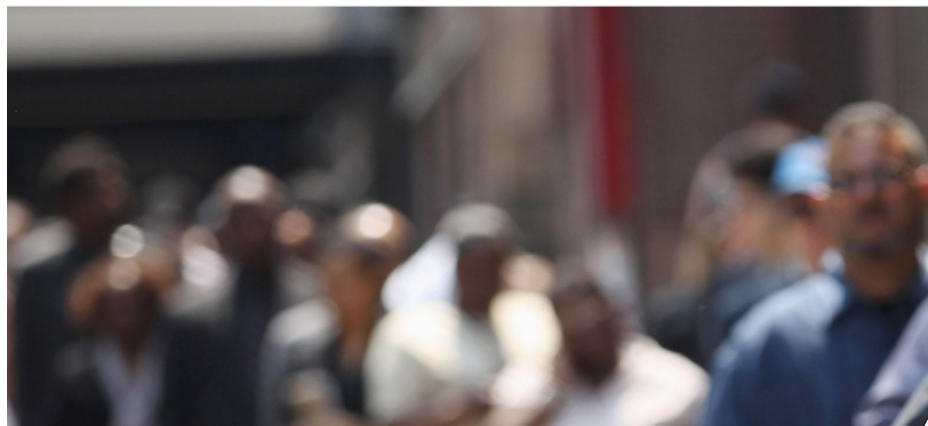
	Economically Inactive	Employed	Unemployed	Total
Colebay	2,945	4,169	81	7,194
Cul-de-sac	4,107	4,387	94	8,588
Little Bay	2,329	3,081	171	5,581
Low Lands	457	251		708
Lower Princess Quarter	4,660	5,315	857	10,833
Philipsburg	1,000	803	91	1,894
Simpson Bay	651	491		1,142
Upper Princess Quarter	2,044	2,457	94	4,595
Total	18,193	20,954	1,388	40,535

Source: STAT Labour Force Survey

8.11 UNEMPLOYMENT RATE BY ZONE

	2013	2017
Colebay	7%	2%
Cul-de-sac	10%	2%
Little Bay	12%	5%
Low Lands	*	*
Lower Princess Quarter	12%	14%
Philipsburg	5%	10%
Simpson Bay	4%	*
Upper Princess Quarter	5%	4%

Source: STAT Labour Force Survey



8.12 UNEMPLOYMENT RATE BY ZONE, GENDER AND AGE GROUP

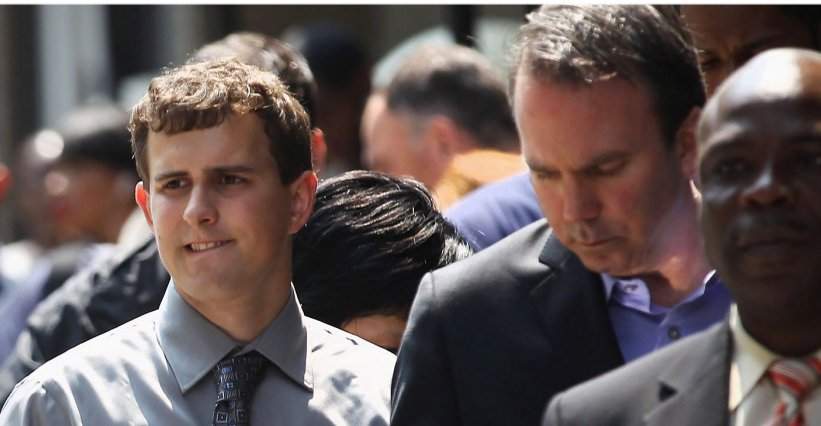
	Male				Female				Grand Total
	15 - 24 yrs	25 - 44 yrs	45+ yrs	Total Males	15 - 24 yrs	25 - 44 yrs	45+ yrs	Total Females	
Colebay	11%			1%	17%		4%	3%	2%
Cul-de-sac		2%		1%		7%		3%	2%
Little Bay	11%	3%	3%	4%	10%	10%	3%	7%	5%
Low Lands									
Lower Princess Quarter	30%	14%	8%	14%	50%	12%	4%	14%	14%
Philipsburg				4%		11%	14%	15%	10%
Simpson Bay									
Upper Princess Quarter	33%	3%		4%	25%	3%		3%	4%
Grand Total	19%	5%	3%	5%	28%	7%	2%	7%	6%

Source: STAT Labour Force Survey

8.13 POPULATION BY GROSS MONTHLY INCOME

	2017
ANG 500 or less	1281
ANG 501 - ANG 1,000	4022
ANG 1,001 - ANG 2,000	6887
ANG 2,001 - ANG 2,500	2875
ANG 2,501 - ANG 3,000	2389
ANG 3,001 - ANG 5,000	4198
ANG 5,000 +	3149
No Income	7388

Source: STAT Labour Force Survey



8.14 HOUSEHOLDS BY HOUSEHOLD GROSS MONTHLY INCOME

Household Income (ANG)	2013	2017
ANG 1 - ANG 1,000	13.6%	11%
ANG 1,001 - ANG 2,000	22.6%	17%
ANG 2,001 - ANG 3,000	24.4%	16%
ANG 3,001 - ANG 4,000	8.1%	12%
ANG 4,001 - ANG 5,000	9.2%	9%
ANG 5,001 - ANG 6,000	3.7%	8%
ANG 6,001 - ANG 7,000	3.6%	4%
ANG 7,001 - ANG 8,000	1.4%	4%
ANG 8,001 - ANG 9,000	2.2%	3%
ANG 9,001 - ANG 10,000	1%	2%
ANG 10,001+	3.4%	10%
No Income	6.9%	3%

Source: STAT

8.15 PERSON EMPLOYED BY GOVERNMENT

per December 31

	2012	2013	2014	2015	2016
Government of Sint Maarten	1834	1869	1854	1824	1762

Source: Min FIN

8.16 MINIMUM WAGE

per January 1st

	per hour	per week (40 hours)	per month (40 hours)
Wage (in ANG)	8.83	353.20	1,530.53

Min VSA





9. ESTABLISHMENTS & ENTERPRISES

Information in this section is based on the St. Maarten Chamber of Commerce & Industry's registry.

The following tables can be found in this section:

- *Number of new registered establishments by type*
- *Number of discontinued registration per legal form*





9.1 NUMBER OF NEW REGISTERED ESTABLISHMENTS BY TYPE

	2011	2012	2013	2014	2015
Proprietorship	248	211	251	128	328
Private Foundation	1	0	1	1	28
Private Limited Liability Company	12	48	56	41	110
Partnership	6	1	2	0	4
Limited Partnership	0	1	2	0	4
Limited Liability Company	330	282	380	164	346
Foundation	75	81	80	44	57
Foreign Formed Company	39	44	18	14	22
Cooperative Society	1	0	0	0	1
Association	14	13	14	17	31
Federation				2	-
Total	726	681	804	411	931

Source: St. Maarten Chamber of Commerce and Industry

9.2 NUMBER OF DISCONTINUED REGISTRATION PER LEGAL FORM

	2015
Proprietorship	217
Private Foundation	3
Private Limited Liability Company	6
Partnership	1
Limited Partnership	-
Limited Liability Company	219
Foundation	11
Foreign Formed Company	1
Cooperative Society	-
Association	-
Federation	-
Total	458

Source: St. Maarten Chamber of Commerce and Industry



10. TOURISM

Tourism is the leading export service and main source of income for Sint Maarten. The industry is identified by three different types of tourists namely: Cruise, Stay-over (overnight) and Marine tourists.

There are two main tourist seasons namely a high and a low season. High season runs from December to end of April and low season from May to the end of November.

The following tables can be found in this section:

- *Number of tourists arriving by air and cruise*

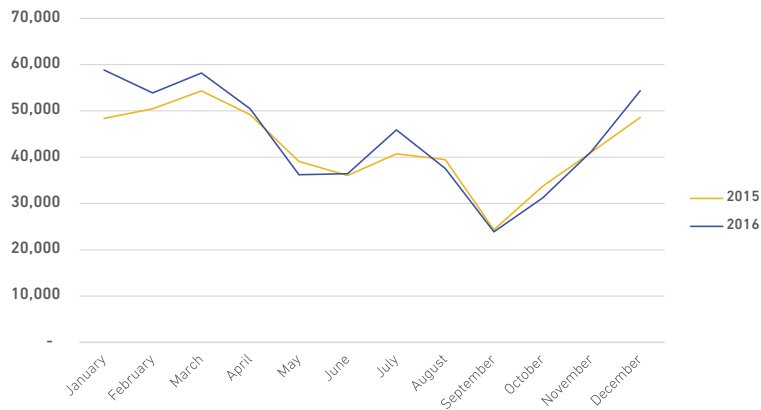


10.1 NUMBER OF TOURISTS ARRIVING BY AIR

	2012	2013	2014	2015	2016
Market:					
North America	278,964	292,488	317,757	310,104	332,323
South America	15,633	15,820	16,705	17,311	13,668
Europe	105,196	103,643	106,848	114,825	142,716
Caribbean	24,236	24,967	26,390	27,402	20,724
Rest of the World	32,691	30,037	32,221	35,732	18,723
Total	456,720	466,955	499,921	505,374	528,154

Source: St. Maarten Tourist Bureau

Passenger Arrivals per month



10.2 NUMBER OF TOURISTS ARRIVING BY AIR PER MONTH

	2012	2013	2014	2015	2016
January	47,899	47,812	52,002	48,379	58,844
February	48,523	47,552	50,224	50,463	53,886
March	50,189	54,369	55,806	54,316	58,159
April	41,815	40,882	48,118	49,185	50,441
May	33,893	33,896	39,470	39,089	36,209
June	32,505	33,525	33,551	36,037	36,435
July	38,643	37,056	39,167	40,719	45,910
August	33,766	36,678	38,650	39,464	37,567
September	20,057	19,591	20,354	24,323	23,878
October	25,247	26,625	29,243	33,727	31,232
November	36,405	38,400	40,607	41,075	41,253
December	47,778	50,569	52,729	48,597	54,340
Total	456,720	466,955	499,921	505,374	528,154

Source: St. Maarten Tourist Bureau



10.3 NUMBER OF TOURISTS ARRIVING BY CRUISE



CRUISE CALLS

622	2012
631	2013
692	2014
683	2015
602	2016

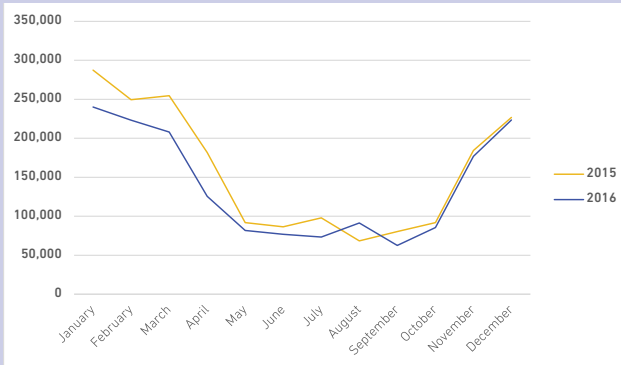


CRUISE PASSENGERS

1,753,215
1,785,670
2,001,996
1,901,617
1,668,863

Source: St. Maarten Harbour Group

Cruise passenger arrivals per month



10.4 NUMBER OF CRUISE PASSENGERS PER MONTH

	2012	2013	2014	2015	2016
January	250,610	258,431	284,405	287,313	240,108
February	247,064	206,031	218,037	249,511	223,221
March	235,854	218,995	233,603	254,713	207,959
April	184,276	171,109	188,198	181,830	125,669
May	76,476	84,588	115,385	91,911	81,747
June	77,211	79,904	102,517	86,571	76,985
July	74,707	95,684	119,121	97,850	73,338
August	82,290	80,226	104,460	68,516	91,418
September	59,864	59,641	93,507	80,464	62,611
October	77,691	77,036	84,339	91,783	85,631
November	160,269	202,654	179,638	184,338	176,798
December	226,903	251,371	278,786	226,817	223,378
Total	1,753,215	1,785,670	2,001,996	1,901,617	1,668,863

Source: St. Maarten Tourist Bureau



11. UTILITIES

NV GEBE (Gemeenschappelijk Elektriciteitsbedrijf Bovenwindse Eilanden) is the main utility company producing and distributing electricity and also distributes water on the island. This section looks at the usage of water and electricity with figures provided by GEBE N.V. directly.

The following tables can be found in this section:

- *Water and electricity volumes*



11.1 WATER SALES VOLUMES (M³)

	2012	2013	2014	2015	2016
Market:					
Domestic	2,246,306	2,267,743	2,353,690	2,607,151	2,761,269
Commercial	702,088	726,406	710,248	816,399	941,431
Large Consumer	553,985	550,444	575,139	606,595	674,509
Total	3,502,379	3,544,593	3,639,077	4,030,145	4,377,209

Source: N.V. GEBE

11.2 ELECTRICITY SALES VOLUMES (KWH)

	2012	2013	2014	2015	2016
Market:					
Domestic	91,292,530	93,278,949	96,423,593	100,317,304	103,185,446
Commercial	162,861,234	172,030,380	175,917,515	177,340,244	179,464,170
Large Consumer	57343168.13	58,005,982	53,250,426	58,102,464	59,496,979
Total	311,496,932	323,315,310	325,591,534	335,760,012	342,146,595

Source: N.V. GEBE



12. TRANSPORT AND COMMUNICATION

Included in this section are various aspects of transport & communication. Information for this section was received from the Princess Juliana International Airport, Department of Economic Inspection, Receivers Office, Bureau Telecommunication and Post, and Korps Politie Sint Maarten.

For the Driver License examination, the following categorisations are made:

Category A	A motorcycle without side-car, with an engine of more than 250cc with manual transmission. Helmet is compulsory. (Changing gear with the foot) (18 years and up)
Category B	A motor vehicle designed to transport people with no more than 8 seats excluding the driver or a motor vehicle designed to transport cargo with a total weight of no more than 3500kg. (Manual transmission) (18 years and up)
Category C	A truck with a weight of more than 3500kg (21 years and up)

Category D	A bus with more than 8 seats excluding the driver (21 years and up)
Category E	A trailer heavier than 750kg, where the driver has a valid driving license category B, C or D. (21 years and up)

The following tables can be found in this section:

- *Aircraft and passenger movements at Princess Juliana International Airport*
- *Number of motor vehicles registered*
- *Traffic accidents*
- *Driver licenses exams*
- *Radio and television stations*
- *Households with cable, internet connection and computer*
- *Number of cruise calls per month*

12.1 AIRCRAFT MOVEMENTS AT PRINCESS JULIANA INTERNATIONAL AIRPORT

	2012	2013	2014	2015	2016
Commercial landings	49,088	49,126	50,893	49,701	52,524
General Aviation landings	9,762	9,191	9,358	9,792	9,607
Military landings	59	47	120	176	13
Total	71,936	62,627	60,371	59,669	62,144

Source: PJIAE N.V.

12.2 PASSENGER MOVEMENTS AT PRINCESS JULIANA INTERNATIONAL AIRPORT

	2012	2013	2014	2015	2016
Arriving (Deplaned Pax)	758,433	763,436	826,811	850,393	863,495
Total Departing (Enplaned Pax)	781,652	788,475	834,882	864,917	882,772
Departing (Enplaned Pax) - Int'l	645,730	649,816	687,686	715,995	727,370
Departing (Enplaned Pax) - Domestic	62,493	67,726	63,058	60,621	55,706
Departing (Enplaned Pax) - Transfer	73,402	70,933	84,138	88,301	99,696
Transit	144,699	119,851	133,424	114,233	93,945
Total Passenger Movement	1,684,757	1,671,762	1,795,117	1,829,543	1,840,212

Source: PJIAE N.V.



12.3 NUMBER OF NUMBER PLATES SOLD

	2012	2013	2014	2015	2016
Passenger cars	19,616	15,444	20,157	21,283	21,283
Motor lorries and pick-ups	3,101	2,691	3,021	3,302	3,199
Motor buses	216	208	232	232	226
Taxis	372	391	446	441	411
Rental cars	2,504	2,485	2,311	2,686	3,203
Motorcycles, incl. Mopeds	799	553	823	858	877
Group	100	95	124	128	135
Heavy Load	267	205	261	274	290

Excludes motor vehicles owned by the government

Source: Receiver Office

12.4 TRAFFIC ACCIDENTS

	2012	2013	2014	2015	2016
Number of accidents	374	316	346	397	385
Number of accidents without injury	260	194	245	285	293
Number of accidents with injury	114	116	101	112	92
Number of victims with injury	148	148	121	149	124
Number of deaths	7	5	2	4	3
Accidents caused by:					
Driving Under Influence (DUI)	12	16	11	17	-
Old-age, exhaustion, illness	9	10	19	2	-
Hit-and-run	125	141	177	165	-

Source: Korps Politie Sint Maarten



12.5 NUMBER OF DRIVER LICENSES EXAMS BY CATEGORY

(theoretical and practical exams)

	2014		2015	
	pass	Re-sit	pass	Re-sit
Category A	46	2	33	0
Category B	793	84	689	0
Category C	23	0	43	0
Category D	60	0	69	0
Category E	3	0	11	0
Other	2			
Total	927	86	845	0

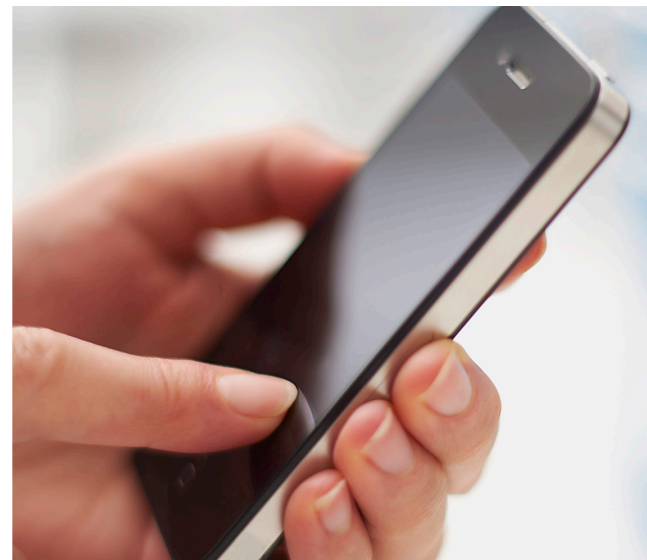
Source: Department of Economic Inspection

12.7 RADIO AND TELEVISION STATIONS

December 2012-2013

Cable Television Stations	2
Broadcast Television Stations	2
Broadcast Television Repeaters	
Radio transmitters:	
AM	1
FM	13

Source: Bureau Telecommunication & Post



12.6 FIXED AND MOBILE TELEPHONE CONNECTIONS

	Fixed telephone connections	Mobile telephone connections
--	-----------------------------	------------------------------

As per:

Dec, 2012	6,862	66,479
Oct, 2013	9,812	69,686

Source: Bureau Telecommunication & Post

12.8 HOUSEHOLDS WITH TELEVISION/CABLE

		%
Television set/flat screen	11,546	89.8
Cable TV/wireless	9,126	71.0
Satellite dish	1,397	10.9

Source: STAT Population Census

12.9 HOUSEHOLDS WITH INTERNET CONNECTION AND COMPUTER

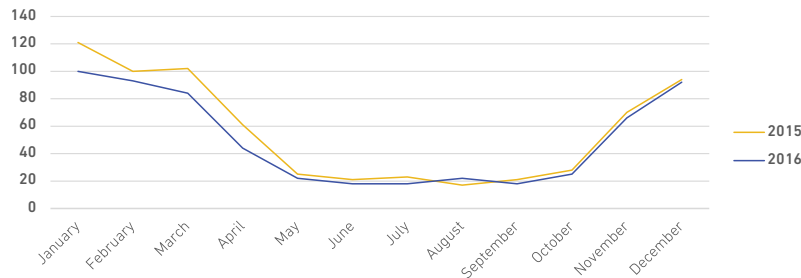
		%
Personal computer(s)/laptop(s)	7,249	56.4
Internet connection to the dwelling	5,989	46.6
Internet reception via mobile phone	3,208	25.0
Mobile internet via laptop or PC (3G)	2,978	23.2

Source: STAT Population Census

12.10 NUMBER OF CRUISE CALLS PER MONTH

	2012	2013	2014	2015	2016
January	97	101	112	121	100
February	100	83	86	100	93
March	94	92	97	102	84
April	70	60	63	61	44
May	19	21	31	25	22
June	18	19	25	21	18
July	17	23	28	23	18
August	19	19	25	17	22
September	15	16	27	21	18
October	24	22	25	28	25
November	54	74	68	70	66
December	95	101	105	94	92
Total	622	631	692	683	602

Cruise calls per month





13. NATIONAL ACCOUNTS

The System of National Accounts (SNA 2008) provides a unique international framework by which the size, structure and growth of a country's economy can be measured. STAT is making strides towards gradually compiling tables of the Minimum Required Data Set (MRDS) and further implementation of SNA 2008.

National accounts provide an overview of the economic process in a certain year; amongst the key sectors within the economy namely, Non-financial, Financial, Government, Households and Non-profit institutions.

The following table covers final estimates of Gross Domestic Product by production up to 2015, and preliminary estimates for 2016.

The following tables can be found in this section:

- *Gross Domestic Product by industry*
- *Gross Domestic Product by expenditure*



13.1 GROSS DOMESTIC PRODUCT

in ANG	2013	2014	2015	2016
GDP (market prices)	1831 mln	1893 mln	1909 mln	1919 mln
GDP per capita	50,735	51,000	49,910	48,694

13.2 GROSS DOMESTIC PRODUCT (GDP) BY SECTOR AND INDUSTRY

in ANG		2011	2012	2013	2014	2015	2016
	Non-Financial Corporations and Establishments						
A+B+C	Agriculture, fishing and mining	2.0	2.1	1.4	2.0	1.8	1.7
D	Manufacturing	25.6	20.4	17.2	17.5	17.3	15.7
E	Electricity, gas and water	73.0	76.5	72.9	73.0	59.8	55.5
F	Construction	118.1	108.6	116.1	112.7	94.4	91.4
G	Trade	212.0	213.6	249.7	268.6	280.2	279.7
H	Hotels and restaurants	116.5	123.1	131.1	151.2	169.0	175.4
I	Transport, storage and communications	171.7	180.4	186.5	207.7	219.1	222.3
KM	Real estate, renting and business activities	356.8	381.0	379.1	370.8	382.5	382.0
N	Health and social work	36.9	44.7	43.0	41.4	43.7	47.1
OP	Other community, social and personal service act.	95.8	87.8	88.8	103.4	103.3	104.5
	Gross Value Added, market prices	1208.4	1238.3	1285.9	1348.2	1371.2	1375.1
	Financial Corporations						
J	Financial intermediation	180.0	194.0	205.8	191.7	168.3	181.2
	Gross Value Added, market prices	180.0	194.0	205.8	191.7	168.3	181.2

in ANG

	2011	2012	2013	2014	2015	2016
Government						
Gross Value Added, market prices	167.1	187.9	194.6	208.5	214.4	216.6
Total Gross Value Added, market prices	1555.5	1620.1	1686.3	1748.3	1753.9	1772.9
Taxes less subsidies on products	154.1	179.6	179.9	180.4	186.3	181.0
minus financial intermediation indirectly measured	34.1	35.1	35.2	35.0	31.3	34.9
Gross Domestic Product, market prices	1675.6	1764.7	1831.0	1893.7	1908.9	1919.0
GDP deflator 2005=100	100.0	103.9	106.4	108.3	108.6	108.7
GDP at constant market prices 2011=100 (mln ANG)	1675.6	1698.9	1721.1	1748.3	1757.2	1764.8
Real GDP growth (%)		1.4	1.3	1.6	0.5	0.4



13.2 GROSS DOMESTIC PRODUCT (GDP) BY SECTOR AND INDUSTRY

in ANG	2011	2012	2013	2014	2015	2016
GDP by Expenditure, market prices (mln ANG)	1675.6	1764.7	1831.0	1893.7	1908.9	1919.0
Final consumption expenditure	1431.4	1363.1	1476.1	1583.7	1488.2	1578.9
Gross Capital Formation	138.3	240.3	258.8	402.7	267.3	273.8
Exports of merchandise and services	1842.3	1999.3	2221.9	2240.8	2184.7	2092.3
Imports of merchandise and services	1736.4	1838.1	2125.8	2333.5	2031.3	2026.0
GDP by Expenditure, constant market prices 2011=100 (mln ANG)	1675.6	1698.9	1721.1	1748.3	1757.2	1764.8
Final consumption expenditure	1355.3	1323.2	1426.7	1520.0	1466.9	1490.8
Gross Capital Formation	214.3	218.2	227.3	247.0	240.3	241.8
Exports of merchandise and services	1842.3	1963.2	2050.8	2155.8	2118.8	2064.3
Imports of merchandise and services	1736.4	1805.7	1983.6	2174.6	2068.9	2032.2
GDP by Expenditure, real growth (%)		1.4	1.3	1.6	0.5	0.4
Final consumption expenditure		-2.4	7.8	6.5	-3.5	1.6
Gross Capital Formation		1.8	4.1	8.7	-2.7	0.6
Exports of merchandise and services		6.6	4.5	5.1	-1.7	-2.6
Imports of merchandise and services		4.0	9.9	9.6	-4.9	-1.8



14. PRICES

Prices of goods and services are constantly subject to change for various reasons. Price indices aim at providing a summary overview of these price changes. The Consumer Price Index (CPI) reflects the changes in the prices of a basket of goods and services as consumed by households in a certain base period. The CPI is widely used as an indicator of inflation, serves as a cost-of-living index and is used to adjust salaries, rental contracts, pensions etc.

The Household Budget Survey (HBS) is the basis for calculating the consumer price index on St. Maarten. The last HBS was conducted in 2015 over a period of 8 months from April to December. Participating households responded to a series of questions about how much they spent on certain items within a specified time period. Results of survey can be found in this section.

The following tables can be found in this section:

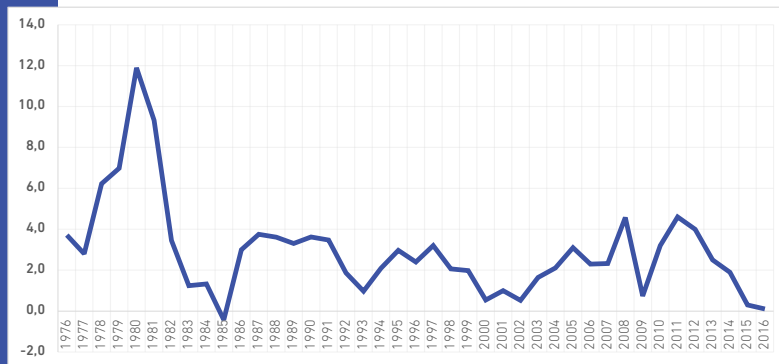
- *Consumer price index and inflation*
- *Household expenditure*

14.1 ANNUAL CONSUMER PRICE INDEX AND INFLATION RATES

Year	CPI *	Inflation (%)
2010	111.2	3.2
2011	116.3	4.6
2012	121.0	4.0
2013	124.0	2.5
2014	126.4	1.9
2015	126.8	0.3
2016	126.9	0.1

* 12 month average
Source: STAT

Inflation Sint Maarten



14.2 ANNUAL CONSUMER PRICE INDEX NUMBERS BY EXPENDITURE CATEGORY

Series for total population, price index numbers based on October 2006 = 100

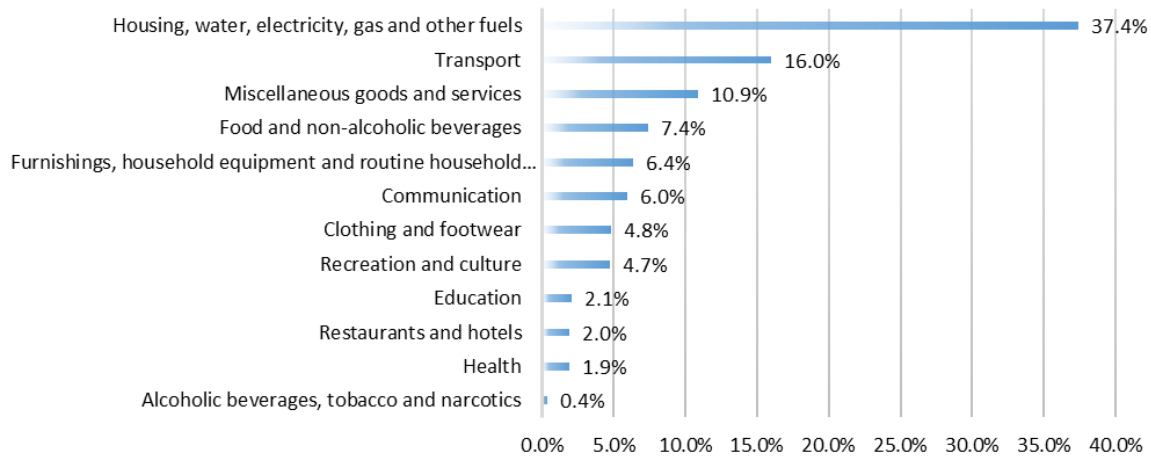
Expenditure category	2012	2013	2014	2015	2016
TOTAL	121.0	124.0	126.4	126.8	126.9
FOOD	158.2	168.1	178.7	191.2	198.9
Cereal products	162.6	170.7	177.6	182.6	186.5
Meat and fish	171.8	179.9	189.9	209.6	214.2
Fats and cooking oils	181.1	189.1	196.3	193.7	189.6
Dairy products (except butter)	159.6	171.1	186.1	195.8	189.5
Potatoes, vegetables and fruits	164.0	185.1	205.5	230	258.4
Sugar and chocolate	144.5	138.8	140.3	143.2	154.5
Prepared food	137.6	143.3	152	158.7	168.5
Outdoor consumption	127.2	128.3	132.8	138.1	141.6
Food n.e.s.	153.7	163.6	171.8	180.4	186
BEVERAGES AND TOBACCO	138.2	142.7	146.3	146.0	147.5
Beverages	138.0	142.5	146.2	145.7	147
Tobacco	142.5	146.2	149.6	156.6	163.9
CLOTHING AND FOOTWEAR	112.7	113.7	114.6	114.6	111.3
Clothing	112.4	113.8	114.7	114.9	110.4
Footwear	113.8	113.1	114.2	113.8	114.9
HOUSING	122.3	123.3	125.6	123.6	123.3
Dwelling costs	113.5	116.4	119.4	122.3	125.3
Energy expenses	168.6	160.1	159.7	131.4	115.8

Expenditure category	2012	2013	2014	2015	2016
Maintenance of dwelling	119.8	121.3	125.8	128.1	128.2
Garden maintenance	161.3	165.4	168.7	172.5	173.2
Water	100.0	100.0	100.0	100	100
HOUSEHOLD FURNISHING AND APPLIANCES	121.2	137.78	140.6	144.8	144.7
Furniture and illumination	109.3	109.30	109.2	107.1	107.1
Upholstery and dwelling textile	101.1	101.69	103.4	106.5	106.6
Household appliances and tools	97.9	98.98	96.2	105.6	99.7
Household articles	137.8	148.79	154.2	164.2	169.9
Household expenses n.e.s.	206.6	338.75	354.8	354.8	362.2
Domestic services	133.2	140.13	137.8	143.2	145.8
Household furnishing n.e.s.	112.7	119.92	126.3	129.6	126.5
MEDICAL CARE	105.3	105.50	110.7	115.1	115.7
Medical care	105.3	105.50	110.7	115.1	115.7
TRANSPORTATION AND COMMUNICATION	110.1	111.04	110.0	107.4	105.5
Transport vehicles in ownership 1)	122.7	123.54	121.9	119.4	119.8
Expenses for own transport vehicles 1)	121.9	124.64	122.4	114.8	107.2
Transport services	100.0	100.00	100	100	100
Communication	96.6	96.83	96.5	96.5	96.2
RECREATION AND EDUCATION	106.5	107.97	107.9	107.1	106.6
Recreation	102.0	102.13	102	268.9	102.2
Entertainment and culture	118.1	120.78	122.7	123.1	123.4
Books etc.	113.5	122.89	118.2	117.8	119.6
Education	109.9	111.38	112	109.1	107.1
Hobby articles	71.5	71.5	71.5	71.5	71.5

Expenditure category	2012	2013	2014	2015	2016
MISCELLANEOUS	113.9	117.45	119.0	120.3	121.3
Personal body care	112.0	113.9	111.6	111.9	113.3
Insurances	105.2	106.1	106.7	107.2	107.7
Commodities and services n.e.s.	124.0	131.7	137.7	140.8	141.8

Source: STAT

14.3 HOUSEHOLD EXPENDITURE PER CATEGORY 2015



Source: STAT HBS Survey



15. JUSTICE AND SECURITY

Information from this section was provided by the Korps Politie Sint Maarten.

The following tables can be found in this section:

- *Total Number of Crimes reported to Police*
- *Number of reported crimes by type*

15.1 NUMBER OF CRIMES REPORTED TO THE POLICE

	2012	2013	2014	2015	2016
Number of crimes	2294	2054	1887	1792	1693

Source: Korps Politie Sint Maarten



15.2 NUMBER OF CRIMES REPORTED TO THE POLICE BY TYPE

	2012	2013	2014	2015	2016
Burglary	112	71	63	105	179
Burglary (House)	366	307	232	212	146
Burglary (Car)	250	258	140	131	76
Car Theft	183	154	150	167	146
Theft	429	380	405	367	291
Robbery	199	160	150	140	129
Extortion					
Murder	10	3	10	10	5
Attempted murder	11	14	23	17	12
Wrongful death	0				
Open violence	10				
Threat	219	174	243	210	215
Ill-treatment	210	225	230	224	212
Ill-treatment with a weapon	58	45	54	40	38
Grievous bodily harm	8	5	12	3	7
Destruction	126	139	117	109	146
Swindling	43	41	1	8	24
Fraud	43/ 16	41	1	8	24
Embezzlement	22	14	20	20	12

	2012	2013	2014	2015	2016
Rape	13	7	14	3	9
Sexual Assault/Molestation	4	7	5	3	3
Sexual intercourse with a girl 12-15yrs	6	0	1	2	1
Sexual intercourse with a girl under 12yrs	4	0	3	0	0
Illicit sexual abuse	4	5	3	4	5
Arson	7	4	10	9	13
Total	2294	2054	1887	1792	1693

Source: Korps Politie Sint Maarten

