



STATISTICAL YEARBOOK

2011

"The goal is to transform data into information and information into insight." *Colin Powell*



Published by the Department of Statistics
St. Maarten 2012

Address:
Juancho Yrausquin Boulevard #6 (units 7/8)
Philipsburg
St. Maarten

Tel.: (1-721) 549-0235

Email: statinfo@sintmaartengov.org

www.sintmaartengov.org

Contents of this Statistical Yearbook may be quoted provided the source is clearly indicated.

Price: ANG 25.00

Preface

The Department of Statistics (STAT), a newly established department within the Government organization, is an independent entity, which collects, processes and distributes statistical information for the benefit of government organizations, science, private agencies and the general public.

This Year Book edition is the first since the department's inception. Previously the yearbook was published by the Central Bureau of Statistics. However, since the dismantling of the Netherlands Antilles, the Department of Statistics is now the publisher of this book, which provides more relevant information about St. Maarten in an expanded form but has the same style, content, and format.

The publication consists of the latest available compiled data on population, health, education, labour, tourism, utilities, foreign trade, transport and communication, national accounts, prices, social affairs and justice.

The Statistical Yearbook will be published annually by STAT in order to inform our users of the different developments within the St. Maarten society. It is hoped that this publication will be a valued reference for business owners, managers, consultants, students, researchers, visitors, public servants, potential investors, and the general population.

The department thanks those persons from the public and private sectors who have contributed to the publication and making of this yearbook a success. In addition, we welcome your comments or suggestions on how this publication can be enhanced to better serve your needs. Kindly direct such to: statinfo@sintmaartengov.org

Makini K. Hickinson
Department Head

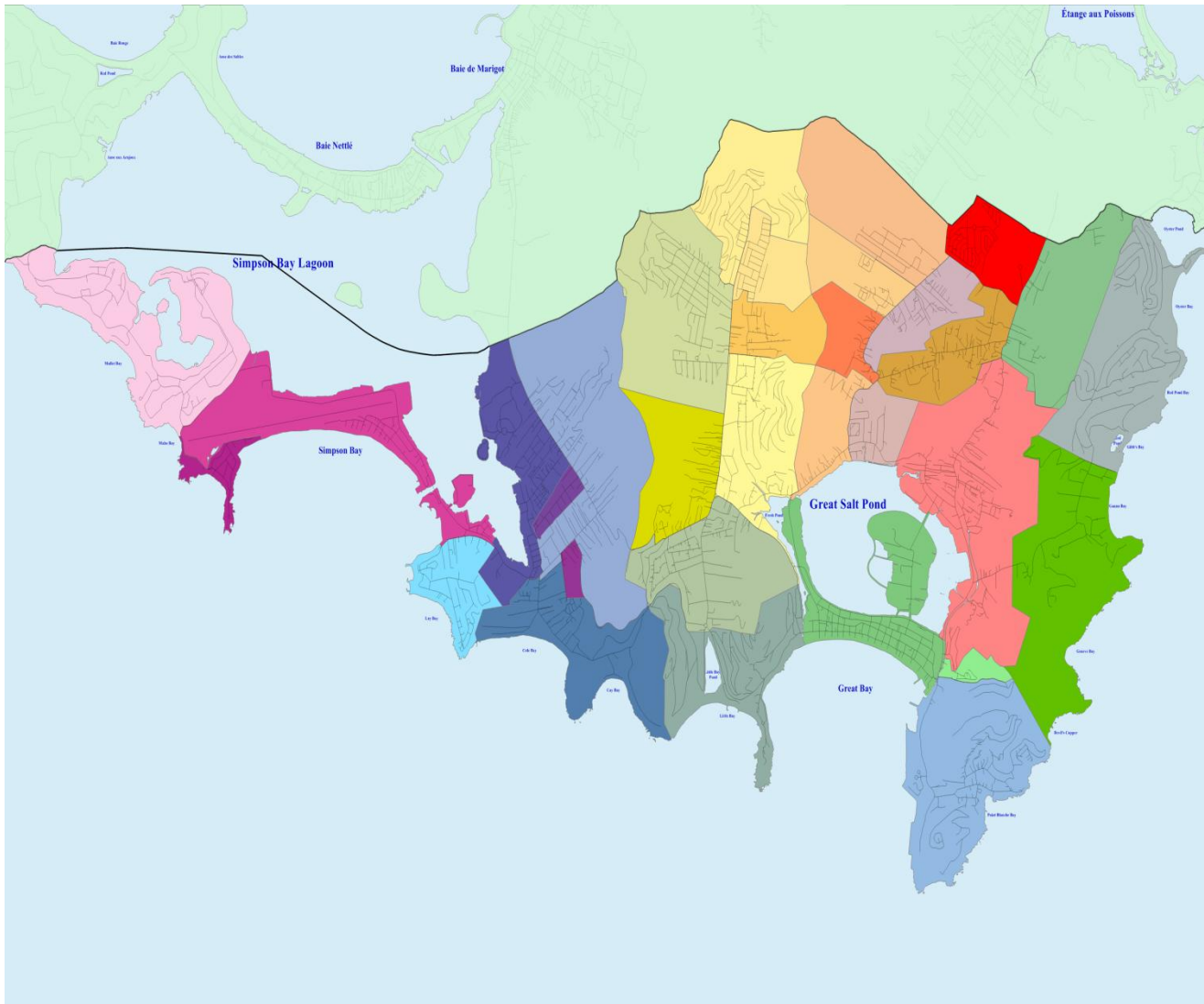
Contents

Preface.....	2
Contents	4
Map of Dutch St. Maarten	7
About St. Maarten	8
1. Climate & Area	10
Figure 1.1: Temperatures in St. Maarten	11
Figure 1.2: Rainfall in St. Maarten.....	11
Table 1.1 Capital, Area & Population Density St. Maarten.....	11
Table 1.2 Climate	12
Table 1.2 Climate (continued)	13
Table 1.2 Climate (continued)	14
2. Population	15
Figure 2.1 St. Maarten Population by Age	16
Table 2.1 Population of St. Maarten, January 1 st	16
Table 2.2 Age Distribution St. Maarten, January 1 st	17
Table 2.3 Vital Statistics Sint Maarten (relative figures)	17
Table 2.4 Life Expectancy Sint Maarten, by Age and Gender.....	18
Table 2.5 Population Change Sint Maarten (absolute figures).....	18
Table 2.6 Immigration by major sending countries.....	19
Table 2.7 Emigration by major receiving countries.....	19
3. Elections.....	20
Table 3.1 Election Results to the Island Council.....	21
Table 3.2 Election Results to the Island Council.....	21
4. Public Health	22
Table 4.1 Reported Syndromes.....	23
Table 4.2 Reported Communicable Diseases 2010.....	23
Table 4.3 Pharmacies and Pharmacists, October 2011	23
Table 4.4 Nursing Personnel December 2010	23

Table 4.5 Doctors Registered by their Specialization, per September 2011	24
Table 4.6 New Registered Number of Known HIV-positives, 1996-2010 Per Year of Diagnosis	25
Figure 4.1 Registered Number of Known HIV-positives, 1996-2010	25
Table 4.7 Newly Known HIV-infected by Age and Gender 2010.....	26
Table 4.8 Attended Emergencies by Category A, B, C.....	26
Table 4.10 Fire & Technical Assistance Calls	28
Table 4.11 Population by Perception of Health, Census 2001	29
Table 4.12 Population by Type of Insurance, Census 2001	29
Table 4.13 Population by Type of Disability, Census 2001	29
4.14 Population by most Common Diseases, Census 2001	29
5. Education	30
Table 5.1 School Population September 2007-2010.....	31
Table 5.2 Total Schools per School Board, September 2007-2010	32
Table 5.3 Teachers, December 2010	32
Table 5.4 University of Sint Maarten Graduates	33
6. Labour.....	34
Table 6.1 Employed Population by Economic Activity	35
Table 6.2 Population and Economically Active Population	35
Table 6.3 Population and Economically Active Population by sex	36
Table 6.4 Employed Population by Level of Education.....	36
Table 6.5 Employed Population by Gross Monthly Income	36
Table 6.6 Employed Population by Status in Employment and Sex.....	37
Table 6.7 Unemployed Population by Age and sex.....	37
Table 6.8 Unemployed Population by Level of Education and Sex	37
Table 6.9 Persons Employed by the Government	37
7. Tourism.....	38
Figure 7.1 Occupancy Rates (Hotel & Timeshare combined)	39
Table 7.1 Stay-Over Tourism	39
Table 7.2 Cruise Tourism.....	39

8. Utilities	40
Table 8.1 Water Sales Volumes (m3).....	41
Table 8.2 Electricity Sales Volumes (kWh)	41
Figure 8.1 Water Sales Volumes (m3).....	41
Figure 8.2 Electricity Sales Volumes (kWh).....	42
9. Foreign Trade.....	43
10. Transport and Communication	46
Table 10.1 Number of Motor Vehicles Registered.....	47
10.2 Traffic Accidents	47
Table 10.3 Number of Driver Licenses Exams (theoretical and practical) by category	47
Table 10.4 Households with Television/Cable, Census 2001	47
Table 10.5 Households with Internet connection and computer, Census 2001	48
Table 10.6 Letters Received by Region of Origin, Netherlands Antilles	48
Table 10.7 Letters sent by Region of Destination, Netherlands Antilles	48
11. National Accounts.....	50
12. Prices.....	52
Table 12.1 Annual consumer price index and inflation rates for St. Maarten since 1973.....	53
Figure 12.1 Rate of Inflation	54
13. Social Affairs.....	56
Table 13.1 Number of Persons Receiving Free Medical Assistance.....	57
Table 13.2 Number of Requests for Free Legal Assistance	57
14. Justice and Security	58
Table 14.1 Number of crimes reported to the police by type of crime.....	59
Table 14.2 Deported illegal immigrants	60

Map of Dutch St. Maarten



About St. Maarten

St. Maarten, located at 18°01'N 63°03'W, is one of the southern islands of the Lesser Antilles, within the archipelago of the West Indies. Its closest neighbouring islands include Anguilla, St. Barths, Saba, St. Eustatius, St. Kitts and Nevis; and it is situated some 200 miles East of Puerto Rico.

St. Maarten/St. Martin is partly Dutch (southern-side) and French (northern-side). After being part of the Netherlands Antilles for over 50 years, Dutch St. Maarten became a constituent country within the Kingdom of the Netherlands on October 10th 2010, essentially becoming a constitutionally equal partner with Aruba, Curaçao, and the Netherlands.

St. Maarten now has its own government and parliament. The Kingdom Government remains responsible for defence and foreign affairs. The Queen of the Netherlands is Head of State and is represented locally by the Governor. Dutch and English are the official languages on St. Maarten.

St. Maarten is a small, open-island economy, driven primarily by the tourism industry. Each year approximately 1.9 million tourists visit the island.

The tourism industry accounts for the greatest contribution to the island's Gross Domestic Product and employment. Apart from the mainstay industry (stay-over & cruise tourism sectors), economic diversification is being sought in the Marine & Yachting sector, Financial services and E-zone.

The Netherlands Antillean guilder is still used on St. Maarten, and the US dollar is widely accepted at a rate of US\$1=ANG1.80.

The 37-square-mile island of St. Maarten was first settled by the Arawaks and was discovered by Christopher Columbus on behalf of Spain in 1493. Columbus sighted the island on November 11th, the holy day of St. Martin of Tours, and so named the island after him. For the next 150 years the island was passed between Holland, England, France and Spain.

The old stone forts that guard many of the island's inlets are proof of the island's turbulent past. In 1648 St. Maarten was peacefully divided between Holland and France, and today is the smallest landmass in the world to be shared by two sovereign nations.

Select Economic Indicators St. Maarten								
	2004	2005	2006	2007	2008	2009	2010	2011
1 Nominal GDP (in millions ANG)	1,092.0	1,176.4	1,259.9	1,342.2	1,423.8	1,421.0	.	.
Real GDP Growth (%change)	4.5	4.8	5.2	4.5	1.6	-0.9	-1.6	.
GDP Per capita		32,760		34,406		34,745		
Inflation (% change)	2.1	3.1	2.3	2.3	4.6	0.7	3.2	4.6
Employed Persons		18,073		20,720		21,378		.
Unemployed Persons		2,800		2,446		2,966		.
Labour Force		20,900		23,166		24,344		.
Population		35,910		39,011		40,898	37,429	40,850
Unemployment Rate (%)		13.4		10.6		12.2		.
2 Number of Households	13,799	14,580	15,173	15,738	16,219	.	.	.
Avg. Household size	3	3	3	3	3	.	.	.
3 Tourism:								
Stay-over tourist arrivals	475,032	467,861	467,804	469,407	475,410	440,185	443,136	424,340
Cruise Passenger arrivals	1,348,450	1,488,461	1,421,645	1,421,906	1,345,812	1,215,146	1,512,618	1,656,159
4 Government Finance (in mln ANG)								
Revenues	177.3	181.6	226.4	224.0	315.0			420.9
Expenditures	184.3	190.1	222.8	224.0	315.0			420.9
Budget Balance	-7.0	-8.5	3.6	0.0	0.0	0.0	0.0	0.0
. = Data not available								
Sources:								
1 & 2. STAT estimates								
3. St. Maarten Tourist Bureau								
4. Island Government Department of Finance								

1. Climate & Area

St. Maarten is characterized by a marine climate. There is a relatively dry season (January-April) and a rainy season (August-December), with moderate to fresh east to north easterlies. The island enjoys a mild tropical climate, with average temperatures of around 27 °C or 81 Fahrenheit. August is usually the warmest month.

The seawater temperature around the island averages around 27.2 °C.

St. Maarten is located within the Atlantic hurricane belt; and on average experiences major-hurricane conditions at least once every 4 – 5 years.

The data observed in table 1.2 has been collected at the Princess Juliana International Airport. Values for the year 2010 were received from the Meteorological Service of St. Maarten, whereas the historical observation series is that of the Meteorological Service of the former Netherlands Antilles.

Figure 1.1: Temperatures in St. Maarten

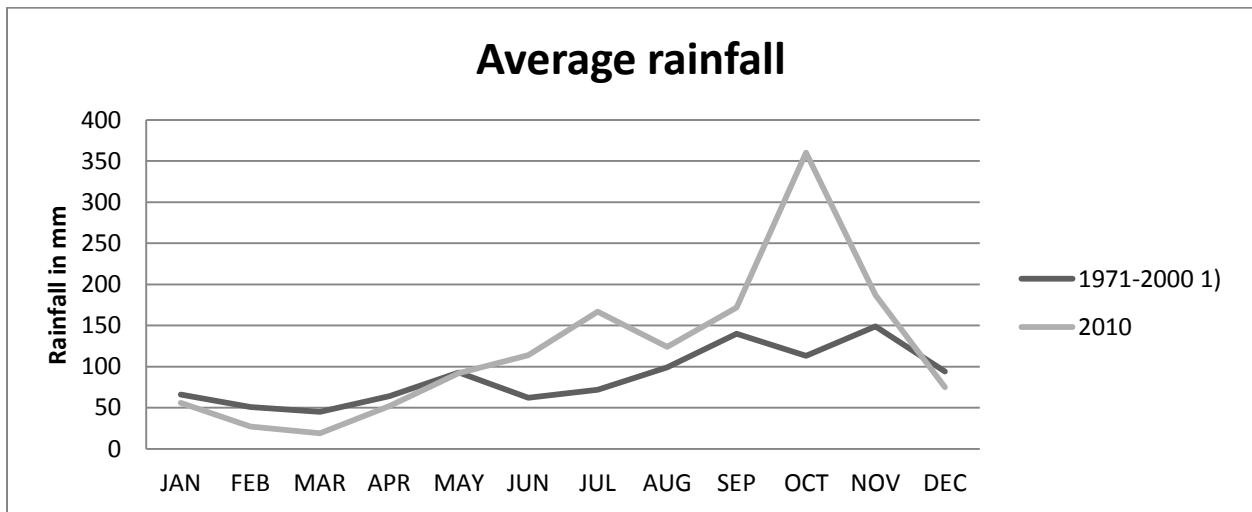
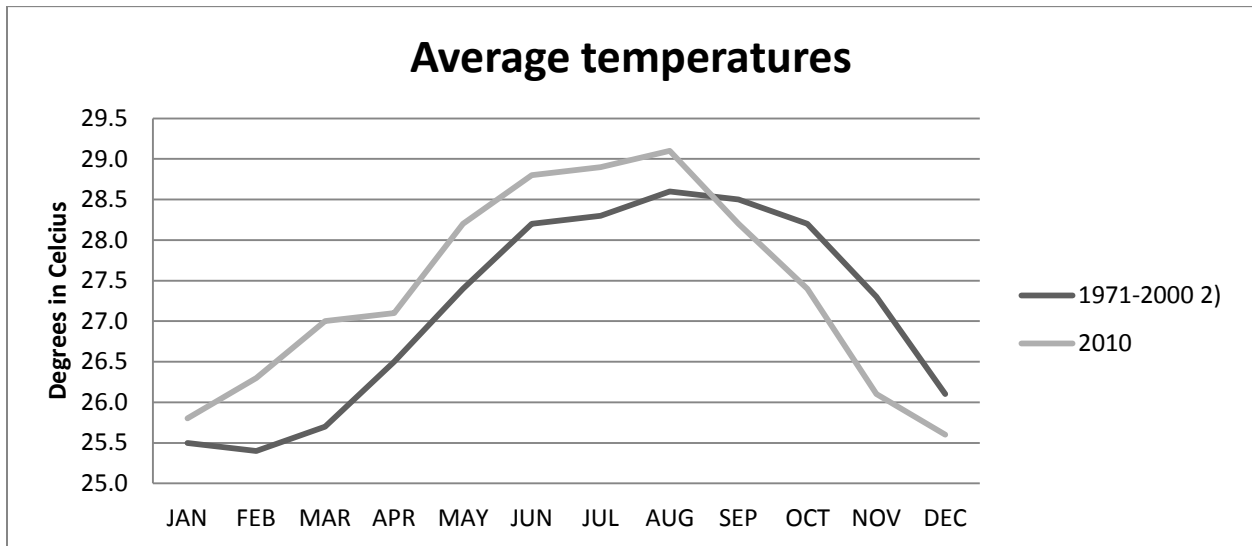


Figure 1.2: Rainfall in St. Maarten

Table 1.1 Capital, Area & Population Density St. Maarten		
Capital	Area in square kilometres	Population density, per square kilometres ¹⁾
Philipsburg	34	1201
Source: Office of Land Registry, Civil Registry & STAT		
1) January 2011		

Table 1.2 Climate

Temperature in degrees centigrade													
	JAN	FEB	MAR	APR	MAY	JUN	JUL	AUG	SEP	OCT	NOV	DEC	YEAR
Average temperature ¹⁾													
1971-2000 ²⁾	25.5	25.4	25.7	26.5	27.4	28.2	28.3	28.6	28.5	28.2	27.3	26.1	27.2
2010	25.8	26.3	27.0	27.1	28.2	28.8	28.9	29.1	28.2	27.4	26.1	25.6	27.4
Absolute maximum temperature													
1971-2000 ²⁾	32.7	31.6	32.6	33.6	33.5	33.9	34.2	35.1	34.8	34.3	33.9	32.1	35.1
2010	31.7	31.2	32.5	32.8	34.0	35.2	33.8	34.6	32.4	31.9	30.0	31.0	32.6
Absolute minimum temperature													
1971-2000 ²⁾	18.6	19.2	19.5	19.3	20.2	22.3	22.1	21.4	22.0	22.1	21.2	20.0	18.6
2010	21.3	22.0	20.3	21.6	23.9	21.9	22.9	23.9	23.0	22.3	22.1	19.9	22.1
Average maximum temperature													
1971-2000 ²⁾	28.6	28.7	29.2	29.8	30.4	31.3	31.6	31.7	31.6	31.2	30.2	29.2	30.3
2010	29.3	30.0	30.7	30.6	32.1	32.6	32.4	32.8	31.2	30.7	29.3	29.0	30.9
Average minimum temperature													
1971-2000 ²⁾	23.2	23.1	23.5	24.1	25.1	26.1	26.1	26.2	26.0	25.7	24.9	23.9	24.8
2010	23.3	23.8	20.3	21.6	23.9	25.9	26.2	26.2	25.6	24.7	23.7	23.0	24.0
Source: Meteorological Service - Princess Juliana International Airport, St. Maarten													
1) Average of daily 24 hourly observations													
2) Climatologically standard period, as available													
Note: To convert from Celsius (C) to Fahrenheit (F), use $F=9/5 \cdot C+32$													

Table 1.2 Climate (continued)

	Precipitation												YEAR
	JAN	FEB	MAR	APR	MAY	JUN	JUL	AUG	SEP	OCT	NOV	DEC	
(Total average) monthly rainfall (in mm)													
1971-2000 ¹⁾	66	51	45	64	93	62	72	99	140	113	149	94	1047
2010	56	27	19	52	92	114	167	124	172	360	187	75	1445
Maximum precipitation in one day													
1971-2000 ¹⁾	41	76	43	101	118	110	65	90	258	122	254	123	258
2010	19	12	6	16	21	30	83	41	40	106	77	41	.
Number of rain days ³⁾													
1971-2000 ¹⁾	12	9	9	12	10	8	12	14	14	14	15	13	142
2010	7	5	5	8	10	16	12	16	18	15	11	5	128

Source: Meteorological Service - Princess Juliana Airport St. Maarten

1) Average of daily 24 hourly observations

2) Climatologically standard period, as available

3) Days with 1,0 mm or more precipitation

Table 1.2 Climate (continued)

Cloud Coverage and Duration of Sunshine													
	JAN	FEB	MAR	APR	MAY	JUN	JUL	AUG	SEP	OCT	NOV	DEC	YEAR
Average cloud coverage (in %) ¹													
1971-2000 2)	37	40	38	41	49	47	46	45	48	46	44	41	43
2010	40	36	49	49	61	64	60	50	53	52	58	59	.
Average daily duration of sunshine (in hours and minutes)													
1961-1990 ²	8:36	8:06	9:01	9:16	8:07	8:03	8:28	8:45	8:11	8:06	8:08	8:28	8:13
2010	8:03	8:15	8:29	8:31	7:39	6:49	7:04	8:31	8:02	7:32	7:06	6:46	.
Wind, Air Pressure and Relative Humidity													
Average wind speed (10 m/s) ¹													
1971-2000 2)	4.9	4.9	4.8	4.8	4.8	5.2	5.3	5	4.6	4.2	4.5	4.7	4.8
2010	3.9	3.0	3.9	4.4	4.2	4.3	4.9	3.6	3.2	2.9	3.3	2.8	.
Maximum wind gust (in m/s)													
1961-1990 2)	20.4	20.9	19.9	20.9	20.9	23.0	35.7	28.6	50.5	44.4	45.9	25.5	50.5
2010	17.0	14.0	14.0	16.0	18.0	17.0	25.0	29.0	15.0	15.0	13.0	11.0	.
Average air pressure (in mb) ¹⁾³⁾													
1971-2000 2)	1017	1017	1016	1016	1016	1017	1017	1016	1015	1014	1014	1016	1016
2010	1016	1014	1015	1014	1015	1016	1016	1013	1012	1013	1013	1014	.
Average relative humidity (in %) ¹													
1971-2000 2)	75	74	74	75	76	75	75	75	76	77	77	77	76
2010	73	70	70	69	71	71	72	73	77	81	80	77	.
Source: Meteorological Service - Princess Juliana International Airport, St. Maarten													
1) Average of daily 24 hourly observations													
2) Climatologically standard period, as available													
3) Atmospheric pressure reduced to Mean Sea Level (MSL)													

2. Population

During the Population Census of 2001, the total population of Dutch St. Maarten was approximately 30, 594 persons. In April 2011, a Population Census was repeated. The data will be published during the last half of 2012.

Below is an estimate of the population in the years between censuses and is based on annual mutation files (i.e. the number of births, deaths, registered immigration & emigration) from the Civil Registry office of St. Maarten, using the 2001 Census population count as the base year.

The St. Maarten population can also be obtained from the Civil Registry, however traditionally this figure is higher than the population count due in part to an over-statement in figures at the civil registry of persons who have emigrated but remain in the system.

Figure 2.1 St. Maarten Population by Age

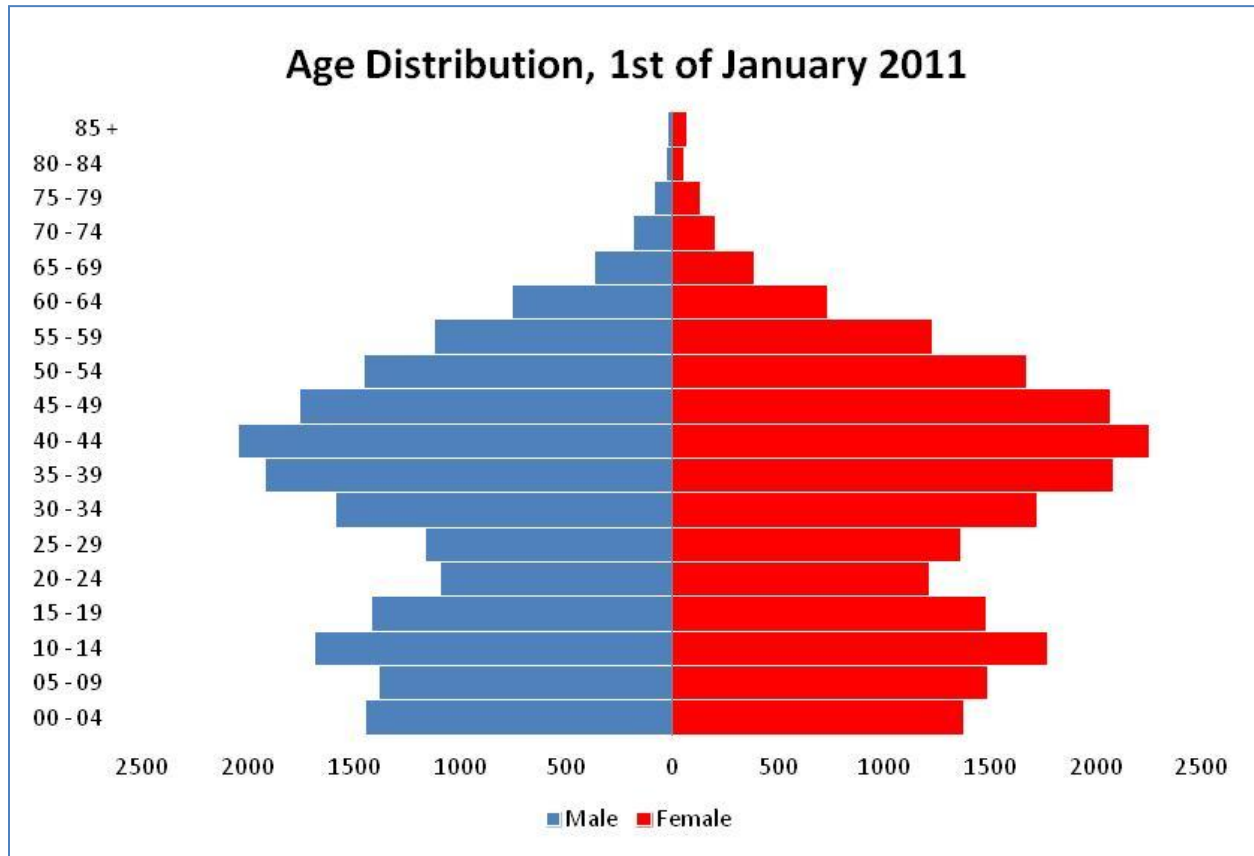


Table 2.1 Population of St. Maarten, January 1st

	Inhabitants			Males per 100 females	Population growth	
	Total	Male	Female		Total	Growth (%) ¹⁾
2000	30599	14989	15610	96.0	-159	-0.52
2001	30440	14823	15617	94.9	1516	4.86
2002	31956	15522	16434	94.5	1231	3.78
2003	33187	16139	17048	94.7	1216	3.60
2004	34403	16707	17696	94.4	1851	5.24
2005	36254	17573	18681	94.1	1373	3.72
2006	37627	18197	19430	93.7	1298	3.39
2007	38925	18823	20102	93.6	1082	2.74
2008	40007	19388	20619	94.0	908	2.24
2009	40915	19876	21039	94.5	-3486	-8.91
2010	37429	17960	19469	92.2	3421	8.75
2011	40850	19594	21256	92.2		

Source: Population Registry and STAT estimates

1) Annual exponential growth rate

Table 2.2 Age Distribution St. Maarten, January 1st

Age	2009			2010			2011		
	Male	Female	Total	Male	Female	Total	Male	Female	Total
00 - 04	1405	1345	2750	1386	1322	2708	1453	1373	2826
05 - 09	1599	1685	3284	1381	1478	2859	1385	1484	2869
10 - 14	1632	1695	3327	1532	1655	3187	1692	1770	3462
15 - 19	1386	1483	2869	1366	1409	2775	1424	1479	2903
20 - 24	1080	1142	2222	1016	1126	2142	1096	1209	2305
25 - 29	1286	1355	2641	1044	1164	2208	1171	1362	2533
30 - 34	1804	1823	3627	1496	1534	3030	1589	1720	3309
35 - 39	2132	2192	4324	1792	1890	3682	1924	2080	4004
40 - 44	2013	2268	4281	1823	2070	3893	2051	2251	4302
45 - 49	1766	1919	3685	1535	1807	3342	1763	2067	3830
50 - 54	1415	1630	3045	1293	1530	2823	1458	1671	3129
55 - 59	1077	1092	2169	1055	1069	2124	1127	1224	2351
60 - 64	655	631	1286	633	660	1293	755	729	1484
65 - 69	303	344	647	306	347	653	373	385	758
70 - 74	189	177	366	171	162	333	186	204	390
75 - 79	68	116	184	81	121	202	91	128	219
80 - 84	39	63	102	25	54	79	30	51	81
85 and older	27	79	106	25	71	96	26	69	95
Total	19876	21039	40915	17960	19469	37429	19594	21256	40850

Source: Population Registry and STAT estimates

Table 2.3 Vital Statistics Sint Maarten (relative figures)

	2006	2007	2008	2009	2010
Live births					
- per 1000 women aged 15-44 yrs	54	45	51	50	51
- number of boys per 100 girls	103	104	118	98	98
- TFR (Total fertility rate)					
Deaths					
- per 1000 inhabitants	3.6	3.2	3.8	3.1	4.1
- Infant mortality rate ¹⁾	13	13	4	6	4
- life expectancy at birth ²⁾					
male	71.1	72.3	72.0	73.1	.
female	76.5	76.9	77.2	78.2	.
Nuptiality					
Marriages total	236	202	232	262	266
Marriages per 1000 inhabitants	6.2	5.0	6.0	7.0	6.5
Divorces	102	112	108	103	80

Source: Population Registry and STAT estimates

1) Under 1 year of age per 1000 live births

2) Values are for the periods 2004-2006, 2005-2007, 2006-2008 and 2007-2009 respectively

Table 2.4 Life Expectancy Sint Maarten, by Age and Gender ¹⁾

Age	2005-2007		2006-2008		2007-2009	
	Male	Female	Male	Female	Male	Female
0	72.3	76.9	72.0	77.2	73.1	78.2
5	68.6	73.1	68.1	73.3	69.0	74.2
10	63.6	68.1	63.2	68.4	64.1	69.2
15	58.8	63.2	58.4	63.4	59.2	64.3
20	54.3	58.3	53.8	58.6	54.5	59.4
25	50.0	53.3	49.4	53.7	50.1	54.6
30	45.3	48.7	44.7	49.1	45.5	49.9
35	40.6	43.8	40.0	44.2	40.8	45.0
40	35.9	39.0	35.2	39.4	36.1	40.2
45	31.3	34.2	30.8	34.7	31.6	35.5
50	26.8	29.5	26.2	30.1	27.0	30.8
55	22.6	25.0	22.0	25.5	22.9	26.3
60	18.5	20.6	18.1	21.0	18.7	21.8
65	14.6	16.6	14.3	17.1	14.8	17.7
70	11.0	12.9	10.8	13.5	11.4	14.2
75	8.2	9.1	8.1	10.0	8.9	11.3
80	5.5	7.3	5.1	7.8	5.9	8.1
85	4.5	5.4	3.7	6.0	3.6	6.4

1) Life expectancies calculated by raw abridged life tables

Table 2.5 Population Change Sint Maarten (absolute figures)

	2006	2007	2008	2009	2010
Live births	526	462	526	490	496
Deaths	138	127	152	123	160
Natural increase	388	335	374	367	336
Registered immigration	1964	1818	1763	2170	859
Registered emigration	685	688	905	827	873
Administrative corrections	-369	-383	-324	-5196	3099
Net registered migration	1279	1130	858	1343	-14
Total increase	1298	1082	908	-3486	3421

Source: Population Registry and STAT estimates

* The high number of net administrative corrections in 2010 was mainly caused by the legalisation of undocumented persons within the Brooks Tower agreement.

Table 2.6 Immigration by major sending countries

	Registered immigration				
	2006	2007	2008	2009	2010
Total	1964	1818	1763	2170	859
Netherlands	450	287	353	297	347
Netherlands Antilles	129	174	161	194	174
Guadeloupe	140	133	120	79	59
Aruba	60	42	32	38	51
USA	94	125	117	97	46
Dominican Republic	276	233	186	160	39
Jamaica	54	121	109	152	10
Guyana	59	98	118	128	9
Haiti	49	77	86	51	9
Dominica	46	48	38	33	8
Suriname	44	41	65	40	6
China	32	30	29	26	3
India	157	129	78	84	1

Source: Population Registry and STAT estimates

Table 2.7 Emigration by major receiving countries *

	Registered emigration ¹⁾				
	2006	2007	2008	2009	2010
Total	685	688	905	827	873
Netherlands	349	358	504	365	476
Netherlands Antilles	176	186	197	231	247
Aruba	54	26	74	40	26
USA	22	10	12	10	8
India	8	10	22	34	23
Guadeloupe	4	1	19	22	16

Source: Population Registry and STAT estimates

* Emigration is likely to be underestimated due to under-registration of emigration

1) Excluding administrative corrections

3. Elections

The Kingdom of the Netherlands has recently undergone a process of constitutional reform, which has now reached fruition. The changes concern the Netherlands Antilles, a country that until recently was made up of the islands of Curaçao, Sint Maarten, Bonaire, Sint Eustatius and Saba. As of 10-10-'10 the Netherlands Antilles has ceased to exist.

In the new constitutional structure, Curaçao and Sint Maarten have acquired the status of countries within the Kingdom (like the Netherlands Antilles and Aruba before the changes). Thus, as from 10 October 2010, the Kingdom consists of four, rather than three, equal countries: Aruba, Curaçao and Sint Maarten are not Dutch overseas dependencies, but full, autonomous partners within the Kingdom, alongside the Netherlands, and each enjoys a high degree of internal autonomy.

Sint Maarten has its own government and parliament. Together, these institutions are empowered to enact legislation in regard to the countries' own affairs. As of October 10, 2010, St. Maarten is now governed by its own Constitution and the following institutions of government: Governor as Head of State, Parliament, and the Council of Ministers headed by the Prime Minister.

The parliament is the highest legislative body of country St. Maarten and represents the entire population of the Dutch side of the island. The parliament consists of 15 members who are elected for a four-year period.

The council of ministers comprises of seven ministers. The ministers are answerable to the parliament. The prime minister chairs the council of ministers. The council of ministers shall debate and determine government policy in order to promote the cohesion of that policy.

Table 3.1 Election Results to the Island Council		
	2010	
St. Maarten	Number of votes	Number of seats
number of valid votes	13,708	
DP	2,339	2
NA	6,298	7
CPA	128	0
UP	4,943	6
Source: Main Voting Bureau St. Maarten		

Table 3.2 Election Results to the Island Council				
Sint Maarten	Number of votes	Number of seats	Number of votes	Number of seats
	2003		2007	
electorate	11055	11	18035	11
number of valid votes			10598	
DP	4919	6	4152	6
SAPP	206	-	257	
NPP	378	-		
PPLP	96	-	75	
SLM				
D'99				
PPA	1158	-	1738	
NDP	21	-		
NA			4338	5
FP			38	
CPA				
UP				
Source: Main Voting Bureau St. Maarten				

4. Public Health

Health statistics presented in this section have been compiled from the Ministry of Public Health, the Epidemiology & Research unit of Curacao, the St. Maarten Medical Centre and the Census 2001 results.

The statistics provided here relate to:

- State of health of Sint Maarten
- The health facilities
- The response to health assistance calls

Statistics on Fire & Medical Emergency Services have also been included. The categorisation for table 4.8 is as follows:

Category A: A situation where there is acute danger for the life of the patient or the victim or that such risk is (probably) present and can only be excluded by the ambulance team on the spot. The response norm is 15 minutes.

Category B: A situation where there is no acute danger for the life of the patient or the victim with indications that ambulance care is needed as soon as possible. The response norm is up to 30 minutes.

Category C: A situation where the state of health of the patient or the victim will not be adversely affected by not granting immediate ambulance care (in this case the ambulance is pre-ordered).

Table 4.1 Reported Syndromes		
	2009	2010
Fever & Respiratory	1951	1794
Undifferentiated fever < 5 Years	50	62
Undifferentiated fever ≥ 5 Years	101	138
Fever & Hemorrhagic symptoms	0	1
Fever & Neurological Symptoms	0	0
Gastroenteritis < 5 Years	307	325
Gastroenteritis ≥ 5 Years	534	657
Rash & Fever Acute Flaccid Paralysis	105	22
Acute Flaccid Paralysis	0	0
Source: Annual Communicable Disease Report-Ministry of Public Health		

Table 4.2 Reported Communicable Diseases 2010	
Dengue	173
Hepatitis B	5
Legionellosis	1
Listeriosis	1
Measles	1
Salmonellosis	3
Shigella	1
Tuberculosis	3
Source: Annual Communicable Disease Report-Ministry of Public Health	

Table 4.3 Pharmacies and Pharmacists, October 2011	
Pharmacies	12
Pharmacists	12
Source: Ministry of Public Health	

Table 4.4 Nursing Personnel December 2010	
Registered nurses	91
Practicing nurses	50
Geriatric nurses	1
Nursing assistants	17
Doctor assistants	6
Source: St. Maarten Nurses Association	

Table 4.5 Doctors Registered by their Specialization, per September 2011

Total specialists	
of which:	
Anaesthesiologist	2
Cardiologist	6
Child Health Specialist	1
Dentist	11
Dental hygienist	1
Dermatologist	2
Ear-, Nose- and Throat Physician	1
Eye Specialist	3
Gynaecologist - Obstetrician	13
Internist	4
Medical Advisor	1
Nutritionist	2
Logopedist	2
Oncologist	1
Ophthalmologist	1
Orthodontist	1
Orthopaedic Surgeon	3
Paediatrician	3
Physical therapist	19
Physician	28
Psychiatrist	4
Psychologist	13
Radiologist	1
Epidemiologist	1
Surgeon	3
Mid Wife	3
Source: Ministry of Public Health	

Table 4.6 New Registered Number of Known HIV-positives, 1996-2010 Per Year of Diagnosis

1996	32
1997	27
1998	21
1999	20
2000	17
2001	14
2002	25
2003	18
2004	28
2005	38
2006	34
2007	29
2008	37
2009	26
2010	21

Source: Epidemiology & Research Unit

Figure 4.1 Registered Number of Known HIV-positives, 1996-2010

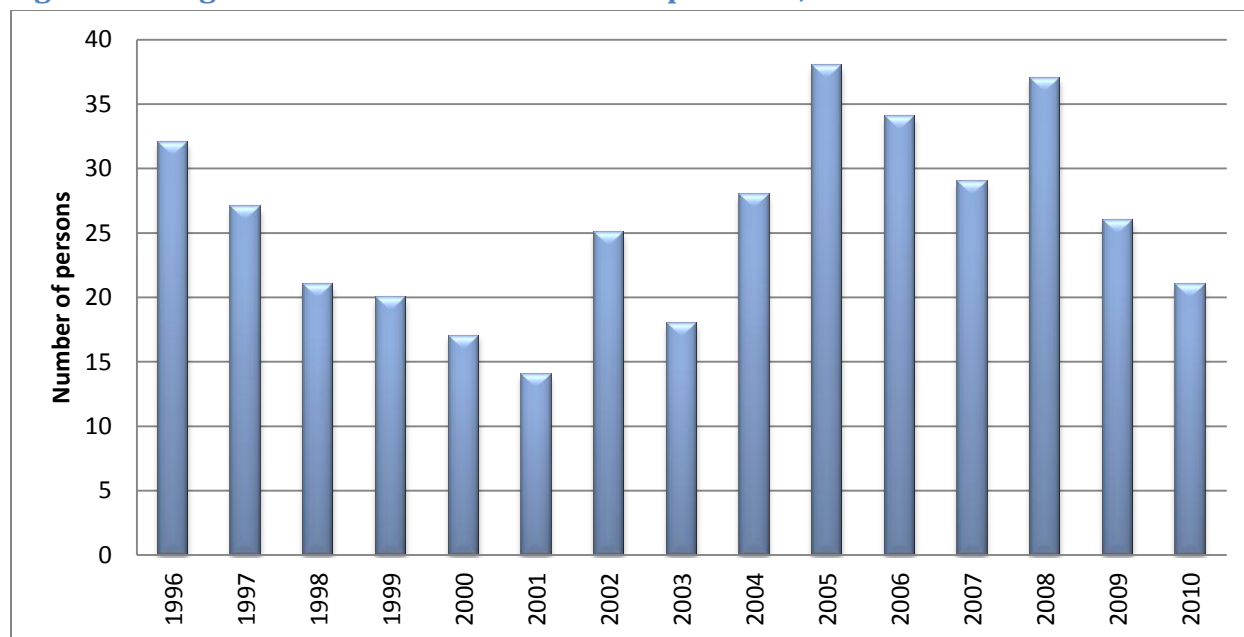


Table 4.7 Newly Known HIV-infected by Age and Gender 2010

Age group	Male	Female
<1	0	0
1-4	0	0
5-14	0	0
15-24	1	1
25-44	6	4
45-64	5	4
65+	0	0
Total	12	9

Source: Epidemiology & Research Unit**Table 4.8 Attended Emergencies by Category A, B, C**

	Jan	Feb	Mar	Apr	May	Jun	Jul	Aug	Sep	Oct	Nov	Dec	
Category A	92	88	96	79	72	76	81	69	59	93	58	77	2008
Category B	77	51	51	58	31	28	51	88	67	67	94	79	
Category C	4	10	16	4	5	8	6	3	7	10	10	9	
Category A	90	88	98	79	84	76	87	88	65	74	71	104	2009
Category B	63	64	63	53	56	46	54	68	62	64	68	84	
Category C	11	13	12	12	14	17	6	10	15	11	9	12	
Category A	105	92	89	78	62	54	80	73	43	110	93	104	2010
Category B	58	53	89	77	59	79	58	50	47	46	67	78	
Category C	12	17	28	15	17	20	22	14	6	1	21	18	

Source: Ambulance Department

Table 4.9 Number of calls by type of diagnosis	2008	2009	2010
No diagnosis	162	115	117
Other external reasons	676	1211	1482
Meningitis	3	1	0
Cerebrovascular accidents	12	21	5
Epileptiforme convulsions	17	26	19
Fever spasms	3	2	1
Other nervous system disorders	2	2	0
Myocardinfarct	5	9	5
Angina pectoris	10	3	1
Ritmic disorders	1	3	1
Cardial asthma	12	11	4
Other blood vessel disorders	5	2	0
Insufficient respiratory	13	51	12
Lung embolism	4	1	0
Other lung disorders	5	3	0
Acute miscarriage	1	3	0
Pre-eclampsia	7	0	0
In partum	3	0	0
Pregnancy disorders	18	21	7
Shock	4	1	0
Blood (non traumatic)	21	8	7
Hypo-hyperglycemia	130	85	34
Hyper-hypertension	1	37	5
Other (non traumatic) disorders	267	43	105
Alcohol	7	11	7
Other medicine	4	0	0
Other intoxications	29	10	11
Wounds	88	143	179
Wounds, cuts, stabs ,gunshot wounds	268	216	110
Fracture, luxation, contusion, distortion	150	179	44
Spinal cord nerves	2	0	0
Traumatic amputations	2	1	0
Internal disorders	53	19	24
Burns	5	6	0
Drowning	4	5	4
Inhalation trauma	5	3	3
Death	38	21	27
Subarachnoidale bleeding	0	1	0
Fluxus Post Partum	0	1	0
Total	2037	2275	2214
Source: Ambulance Department			

Table 4.10 Fire & Technical Assistance Calls

	2009	2010
Total calls		
of which:	391	451
Fire		
Boat fire	0	1
Bush fire	139	113
Car fire	20	29
Electrical fire	6	36
False alarm	14	2
Garbage fire	22	9
Generator fire	2	7
House fire	45	76
Building fire	0	0
Assistance		
Bees nest	0	0
Car accident	11	17
Cut lock	4	0
Cut tree	11	15
Leaking gas cylinder	9	20
Clean road	75	85
Pump water	10	15
Stand by	3	0
Wet ground	0	0
Give light	5	0
Hazardous materials	15	26
Water pollution	0	0
Other	0	0
Calls by size		
Small incident	284	367
Middle incident	60	34
Large incident	7	12
False alarm	40	38

Source: Sint Maarten Fire Department

Table 4.11 Population by Perception of Health, Census 2001

Very good	12409
Good	14955
Reasonable	2863
Bad/Very bad	327
Unknown	40
Total	30594

Source: Census 2001 Department of Statistics**Table 4.12 Population by Type of Insurance, Census 2001**

SVB	11899
Not insured	9238
Private insurance	3412
BZV	2171
Other type of insurance	1234
PP-card	1155
Insurance by employer	944
ZOG	541
Total	30594

Source: Census 2001 Department of Statistics**Table 4.13 Population by Type of Disability, Census 2001**

Visually impaired	773
Physical	276
Other	175
Multiple	151
Hard of hearing	79
Mental	28
Deafness	22
Blindness	21
Total	1525

Source: Census 2001 Department of Statistics**4.14 Population by most Common Diseases, Census 2001**

High blood pressure	1223
Diabetes	767
Asthma Chronic Bronchitis	553
Heart problem	224
Glaucoma	132
Kidney problem	93
Consequence heart attack	27
Total	3019

Source: Census 2001 Department of Statistics

5. Education

The educational system in Sint Maarten comprises public and private schools. The information presented in this section is compiled from the Department of Education who is in charge of the public school system.

Some schools have adopted the Dutch school system while others maintain the American system. Comparing grades consistently is thus a challenge.

This section offers information on:

- The public school population
- The enrollment at the University of Sint Maarten
- The number of teachers

Table 5.1 School Population September 2007-2010

			2007	2008	2009	2010
FAVE	Foundation for Academic and Vocational Education	St. Maarten Academy School	1041	1053	1114	1133
MAC	Methodist Agogic Centre	Rev. John A. Gumbs Campus	408	399	405	407
MAC	Methodist Agogic Centre	Browlia F. Maillard Campus Charles Leopold Bell Primary School	439	434	448	434
OO	Public Education	Dr. Martin Luther King Jr	98	55	83	117
OO	Public Education	Genevieve de Weever	234	210	229	231
OO	Public Education	Leonard Connor School	298	265	259	248
OO	Public Education	Oranje School	243	258	250	220
OO	Public Education	Prins Willem Alexander School	389	366	360	336
OO	Public Education	Ruby Labega School	127	122	116	101
OO	Public Education	St Maarten Vocational School	257	218	213	207
OO	Public Education	Hillside Christian School	213	206	206	0
PCOBE	Foundation for Protestant Christian Education	Seventh Day Adventist School	639	589	582	577
SDA	Foundation Of Seventh Day Adventist	Sr Borgia School	252	243	282	308
SKOS	Stichting Katholiek Onderwijs St.Maarten	Sr. Magda School	204	203	197	194
SKOS	Stichting Katholiek Onderwijs St.Maarten	Sr. Marie Laurence School	355	337	333	347
SKOS	Stichting Katholiek Onderwijs St.Maarten	Sr. Regina School	0	179	178	189
SKOS	Stichting Katholiek Onderwijs St.Maarten	St. Dominic High School	175	188	185	180
SKOS	Stichting Katholiek Onderwijs St.Maarten	St. Dominic Basisschool	242	253	271	312
SKOS	Stichting Katholiek Onderwijs St.Maarten	St. Joseph School	263	264	265	254
SKOS	Stichting Katholiek Onderwijs St.Maarten	Milton Peters College	185	189	198	196
SVOBE	Stichting Voortgezet Onderwijs St. Maarten	Sundial School	1089	1025	996	984
SVOBE	Stichting Voortgezet Onderwijs St. Maarten		389	404	383	377
	Total		7540	7460	7553	7352

Source: Education Department

Table 5.2 Total Schools per School Board, September 2007-2010		Foundation Based Education Aged Children (Special Basis Education)	Foundation Based Education (FO)	HAVOVWO	Labour Market Oriented Education (VSBO AGO)	Preparatory Secondary Vocational Education (VSBO)	Education (SBO)	Caribbean Examinations Council (secondary)	Total
FAVE	Foundation for Academic and Vocational Education					1		1	2
MAC	Methodist Agogic Centre		1						1
OO	Public Education	1	6				1		8
PCOBE	Foundation for Protestant Christian Education		1						1
SDA	Foundation Of Seventh Day Adventist		1						1
SKOS	Stichting Katholiek Onderwijs St. Maarten		6					1	7
SVOBE	Stichting Voortgezet Onderwijs St. Maarten			1		2			3
Total		1	15	1	0	3	1	2	23

Source: Education Department

Table 5.3 Teachers, December 2010		
Primary schools		326
Male		28
Female		298
Secondary schools		233
Male		93
Female		140

Source: Education Department

Table 5.4 University of Sint Maarten Graduates

	2006	2007	2008	2009	2010	2011
A.A. General Liberal Arts Program	14	6	13	6	13	8
Male	1	1	3	2	1	1
Female	13	5	10	4	12	7
A.A. Business Program	16	12	19	18	7	20
Male	3	4	3	8	3	10
Female	13	8	16	10	4	10
A.A. Computer Science Program	1	-	-	-	-	-
Male	-	-	-	-	-	-
Female	1	-	-	-	-	-
B.A. Education Program	6	6	9	7	9	16
Male	-	-	1	1	0	0
Female	6	6	8	6	9	16
Bachelor of Business Administration	4	4	4	3	1	-
Male	-	-	1	-	0	-
Female	4	4	3	3	1	-
M.A. Education	-	-	9	5	2	-
Male	-	-	3	0	0	-
Female	-	-	6	5	2	-
B.A. Business Administration	-	-	-	-	1	4
Male	-	-	-	-	1	0
Female	-	-	-	-	0	4
B.S. Hospitality & Tourism Management	-	-	-	-	-	4
Male	-	-	-	-	-	3
Female	-	-	-	-	-	1
Total	41	28	54	44	33	55
Male	4	5	11	13	5	12
Female	37	23	43	31	28	43

Source: University of Sint Maarten

6. Labour

Labour market data for St. Maarten presented in this section is derived mainly from the Labour Force Surveys (LFS). The LFS is a sample survey among households, with the aim to measure recent developments on the labour market. The most important concepts in this survey are the unemployment rate, developments in the employed and unemployed population, and the degree of participation.

The last LFS was conducted in 2009, and will be repeated annually as of 2013 by STAT.

Employed population:

All persons 15 years and older with a job or their own business or who during the week prior to the survey, worked 4 hours or more for a remuneration.

Unemployed Population:

All persons 15 years and older who during the survey were unemployed, were actively looking for work the month prior to the survey and who can start working within 2 weeks, should there be a job available.

Labour Force (also called the economically active population)

The number of employed and unemployed added together.

Economically not active

All persons 15 years and older who are neither employed nor unemployed.

Unemployment rate

The number of unemployed divided by the labour force multiplied by 100.

Youth unemployment rate

The unemployment rate of persons in the age group 15 to 24.

Participation rate

The labour force divided by the total population multiplied by 100. It indicates what proportion of the total population is economically active.

Table 6.1 Employed Population by Economic Activity

	2003	2005	2007	2009
Agriculture/Fishery/Mining	160	191	227	163
Manufacturing	529	582	622	646
Electricity/Gas/Water	253	267	285	325
Construction	1512	1847	2248	2307
Wholesale/Retail	3226	3605	4315	4146
Hotels/Restaurants	2563	2625	2876	2729
Transport/Storage	1375	1578	1784	2031
Financial intermediation	466	504	604	692
Real estate, renting	1441	1763	2034	2520
Public administration/Social services	1128	1356	1658	1600
Education	630	628	782	723
Health/Social work	450	468	573	633
Other community	1602	1733	1893	1910
Private households	700	709	685	648
Extra territories	164	218	183	305
Total	16200	18072	20770	21378

Source: CBS Labour Force Survey

Table 6.2 Population and Economically Active Population

	2001²	2003	2005	2007	2009
1. Employed population	15413	16200	18073	20720	21378
2. Unemployed population	2271	3433	2798	2446	2966
3. Economically active population	17684	19633	20871	23166	24344
4. Unemployment rate (2/3 x 100) (%)	12.8	17.5	13.4	10.6	12.2
5. Youth unemployment rate	25.3	31.9	30.4	26.0	29.4
6. Total population ¹⁾	30369	33317	35910	39011	40898
7. Participation rate (3/6 x 100) (%)	58.2	58.9	58.1	59.4	59.5

Source: CBS Labour Force Survey
1) excluding population in institutions
2) Population and Housing Census 2001

Table 6.3 Population and Economically Active Population by sex

	2005			2007			2009		
	Male	Female	Total	Male	Female	Total	Male	Female	Total
1. Employed population	9714	8359	18073	11310	9410	20720	11233	10145	21378
2. Unemployed population	1194	1604	2798	935	1511	2446	1312	1654	2966
3. Economically active population	10908	9963	20871	12245	10921	23166	12545	11799	24344
4. Unemployment rate (2/3 x 100) (%)	10.9	16.1	13.4	7.6	13.8	10.6	10.5	14.0	12.2
5. Total population ¹⁾	17303	18607	35910	18834	20177	39011	19757	21141	40898
6. Participation rate (3/5x100) (%)	63.0	53.5	58.1	65.0	54.1	59.4	63.5	48.0	52.3

Source: CBS Labour Force Survey**1) excluding population in institutions****Table 6.4 Employed Population by Level of Education**

Elementary education	2565
Secondary education 1st stage	8055
Secondary education 2nd stage	6444
Higher education	3078
Unknown	1236
Total	21378

Source: CBS Labour Force Sample Survey, 2009**Table 6.5 Employed Population by Gross Monthly Income**

	2005			2007			2009		
	Male	Female	Total	Male	Female	Total	Male	Female	Total
500 or less	240	421	661	96	406	502	125	145	270
501 - 1000	554	1177	1731	309	1347	1656	250	738	988
1001 - 2000	2033	2329	4362	4113	3812	7925	3152	3690	6842
2001 - 2500	1905	1176	3081	1736	807	2543	1560	1346	2906
2501 - 3000	1481	918	2399	1515	654	2169	1061	897	1958
3001 - 5000	1004	682	1686	2379	1846	4225	1950	1549	3499
5000 plus	1420	1377	2797	1162	538	1700	2044	1085	3129
Unknown	1077	279	1356				1092	695	1787
Total	9714	8359	18073	11310	9410	20720	11234	10145	21379

Source: CBS Labour Force Sample Survey

Table 6.6 Employed Population by Status in Employment and Sex

	2007			2009		
	Male	Female	Total	Male	Female	Total
Employer/Own account worker	1479	653	2132	2212	942	3154
Permanent service	7451	6722	14173	6645	7049	13694
Temporary service	937	795	1732	846	719	1565
Casual jobs	576	255	831	584	274	858
Contract	715	765	1480	813	975	1788
Other	152	220	372	133	186	319
Unknown						
Total	11310	9410	20720	11233	10145	21978

Source: CBS Labour Force Survey

Table 6.7 Unemployed Population by Age and sex

	2007			2009		
	Male	Female	Total	Male	Female	Total
15 - 24	235	332	567	366	458	825
25 - 44	416	829	1245	630	772	1402
45 and older	284	350	634	316	423	740
Total	935	1511	2446	1312	1653	2967

Source: CBS Labour Force Survey

Table 6.8 Unemployed Population by Level of Education and Sex

	2007			2009		
	Male	Female	Total	Male	Female	Total
Elementary education	322	530	852	209	258	467
Secondary education 1st stage	432	517	949	701	714	1415
Secondary 2nd stage +	181	464	645	300	530	830
Unknown				102	152	254
Total	935	1511	2446	1312	1654	2966

Source: CBS Labour Force Survey

Table 6.9 Persons Employed by the Government

	2004	2005	2006	2007	2008	2009	2010
Government of Sint Maarten	1082	1119	1276	1299	1122	.	1592

Source: Department of Finance

7. Tourism

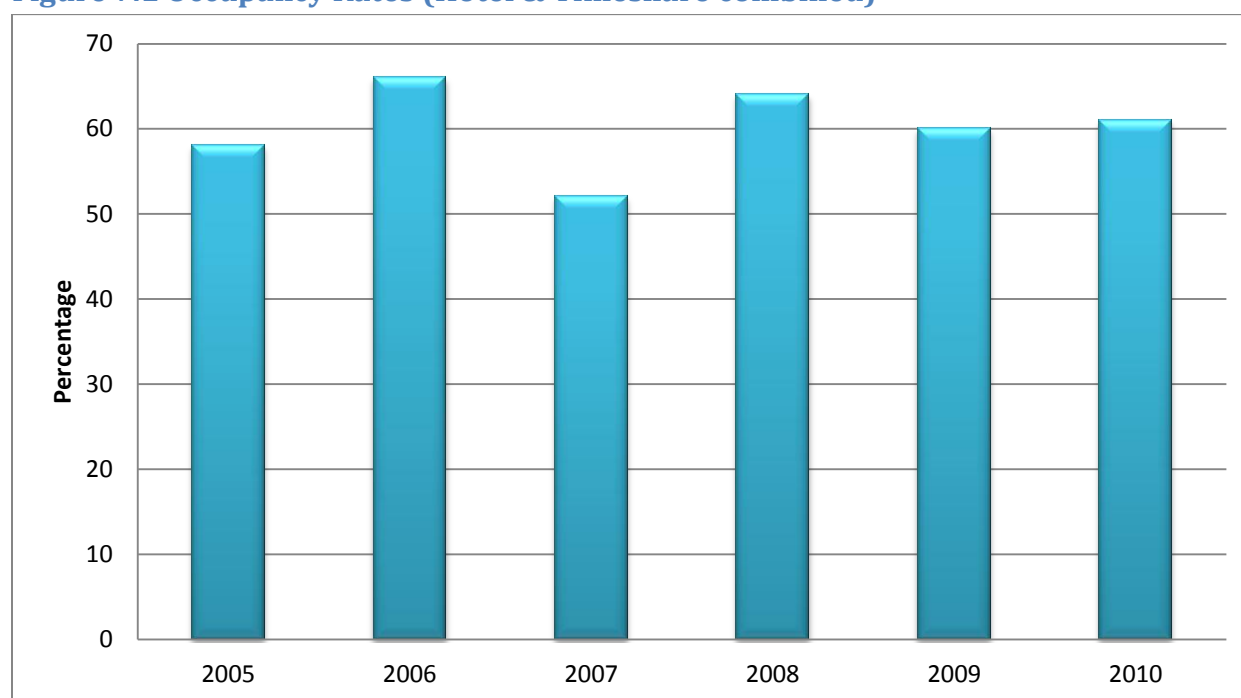
Tourism is the leading export service for Sint Maarten. Sint Maarten identifies three different types of tourists namely , cruise tourist, stay-over tourist and marine tourist.

Sint Maarten offers a unique tourist experience with its Dutch/French divide, strategic location complemented by state-of-the-art airport & harbour facilities, culinary variety and lots of beaches, nightlife & shopping.

This section offers a look at:

- Hotel occupancy rates
- Tourist volumes (Stay-over & cruise sectors)

Figure 7.1 Occupancy Rates (Hotel & Timeshare combined)



Source: St. Maarten Hospitality & Trade Association (SHTA)

Table 7.1 Stay-Over Tourism

	2006	2007	2008	2009	2010	2011
North America	276,710	286,181	291,967	272,708	269,877	252,460
South America	12,706	14,020	12,894	11,685	14,214	15,960
Europe	97,058	96,365	102,713	98,341	101,118	101,712
Caribbean	39,034	35,209	31,152	25,266	23,780	23,314
Rest of the World	42,296	37,632	36,684	32,185	34,147	30,894
Total	467,804	469,407	475,410	440,185	443,136	424,340

Source: St. Maarten Tourism Bureau

Table 7.2 Cruise Tourism

	2006	2007	2008	2009	2010	2011
Number of cruise calls	609	619	518	500	551	596
Cruise Passengers	1,421,645	1,421,906	1,345,812	1,215,146	1,512,618	1,656,159

Source: St. Maarten Harbour Holding Co.

8. Utilities

NV GEBE, or Gemeenschappelijk Elektriciteitsbedrijf Bovenwindse Eilanden, is the sole utility company producing and distributing electricity on St. Maarten, Saba and Statia and distributing water on St. Maarten and Statia. GEBE is owned by shareholders. A Shareholder Foundation was established in 1996 and 100% of the shares, which are owned by the three islands, were transferred to the shareholder foundation. Saba and St. Eustatius each have one representative on the Shareholder Foundation while St. Maarten has three.

This section looks at the usage of water and electricity with figures provided by GEBE N.V.

Table 8.1 Water Sales Volumes (m3)

	2006	2007	2008	2009	2010	2011
Domestic	2,048,282	2,131,117	2,173,600	2,239,547	2,228,178	2,194,992
Commercial	757,403	912,251	850,065	716,440	704,356	698,432
Large Consumer	468,256	474,268	468,745	502,812	497,300	489,330
Total	3,273,941	3,517,636	3,492,409	3,458,799	3,429,834	3,382,754

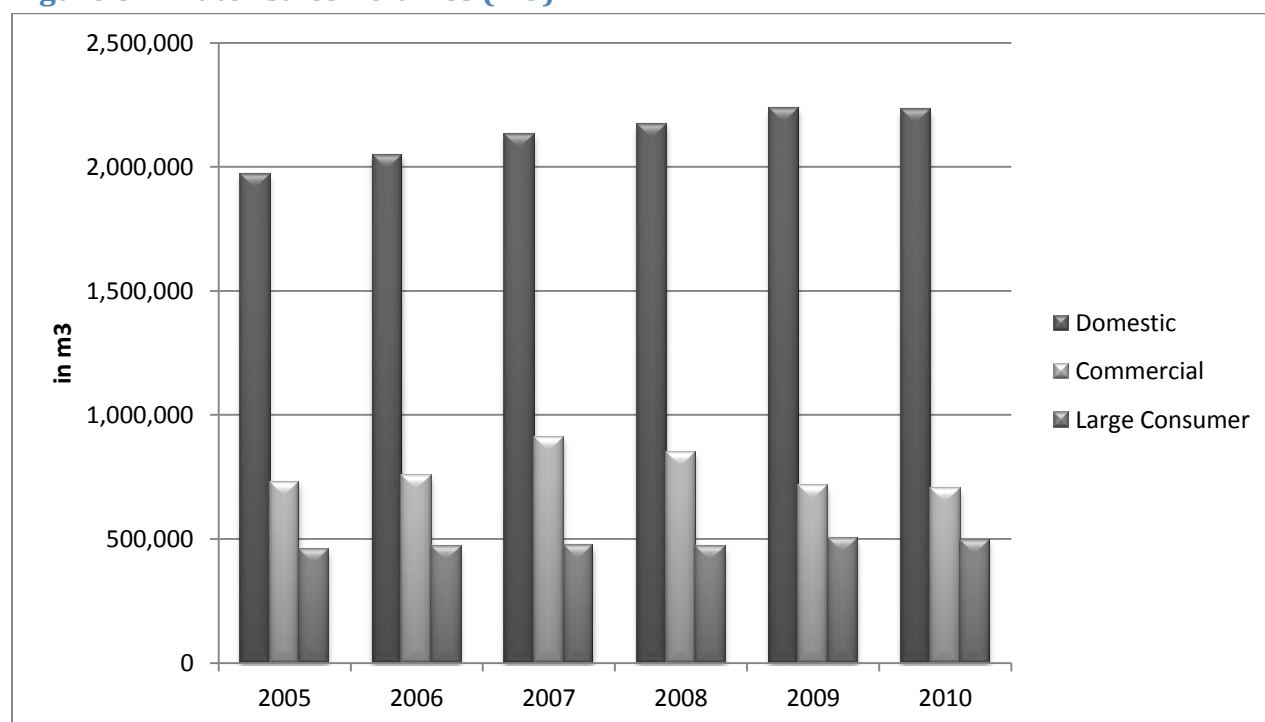
Source: N.V. GEBE

Table 8.2 Electricity Sales Volumes (kWh)

	2006	2007	2008	2009	2010	2011
Domestic	88,836,268	94,101,613	90,613,989	93,711,728	95,756,399	90,573,252
Commercial	150,147,444	169,933,892	169,492,641	168,337,135	173,414,803	162,021,998
Large Consumer	38,578,510	39,580,240	39,850,558	49,945,830	57,005,300	56,556,220
Total	277,562,222	303,615,745	299,957,188	311,994,693	326,176,502	309,151,470

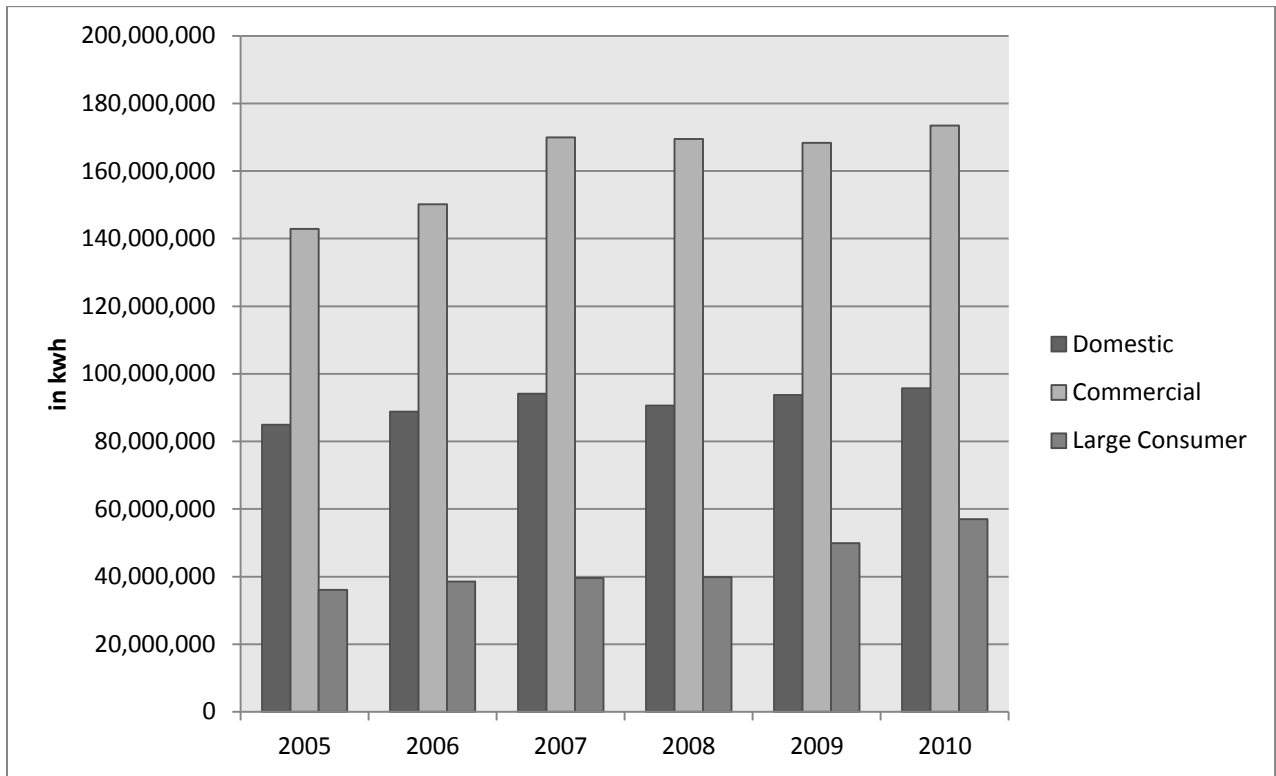
Source: N.V. GEBE

Figure 8.1 Water Sales Volumes (m3)



Source: N.V. GEBE

Figure 8.2 Electricity Sales Volumes (kWh)



Source: N.V. GEBE

9. Foreign Trade

The foreign trade statistics presented in this section are based on the results of the annual Import- Export Survey conducted by the Department of Statistics. Sint Maarten is a free trade country therefore limited information on the value of commodities being traded are available through the Customs Department.

The commodity classifications for both the import and export trade statistics are based on the Standards International Trade Classification (SITC).

This section deals with statistics on import and export trade segmented by SITC section and industry.

Table 9.1 Imports by SITC Section ¹

SITC		2007	2008	2009
Section	Description	('000) Ang.	('000) Ang.	(000) Ang.
0	Food and live animals	70040	129,738	122,682
1	Beverages and tobacco	44894	117,714	109,629
2	Crude materials, inedible, except fuels	12416	5950	6104
3	Mineral fuels, lubricants and related materials	142,403	143,844	160,470
4	Animal and vegetable oils, fats and waxes	1507	2169	2050
5	Chemicals and related products, n.e.s.	16607	20592	21247
6	Manufactured goods classified chiefly by material	112,981	123,771	117,002
7	Machinery and transport equipment	98369	58469	50598
8	Miscellaneous manufactured articles	307,853	283,529	228,834
9	Commodities and transactions not classified elsewhere in the SITC	589	181	0
TOTAL		807,659	885,957	818,616

Source: Import-Export Survey 2009

1) Standard International Trade Classification

Table 9.2 Exports by SITC Section

SITC		2007	2008	2009
Section	Description	('000) Ang.	('000) Ang.	('000) Ang.
0	Food and live animals	6008	10995	11189
1	Beverages and tobacco	28313	69832	62591
2	Crude materials, inedible, except fuels	441	667	695
3	Mineral fuels, lubricants and related materials	0	0	0
4	Animal and vegetable oils, fats and waxes	306	683	699
5	Chemicals and related products, n.e.s.	2000	1878	1923
6	Manufactured goods classified chiefly by material	9850	9567	9138
7	Machinery and transport equipment	10092	8092	9141
8	Miscellaneous manufactured articles	50431	15139	15806
9	Commodities and transactions not classified elsewhere in the SITC	0	15	16
TOTAL		107,441	116,868	111,198

Source: Import-Export Survey 2009

Table 9.3 Imports by Industry

Industry	Description	2007 ('000) Ang.	2008 ('000) Ang.	2009 ('000) Ang.
A / B	Agriculture, Hunting, and Forestry	894	1061	1161
D / E	Manufacturing	20022	19499	16784
F	Construction	22284	25278	24019
G	Wholesale and Retail Trade	670,132	746,435	684,949
H	Hotels and Restaurants	19973	19868	19429
I	Transport, Storage and Communications	20345	21989	20040
K	Real Estate, Renting and Business Activities	39830	37477	38184
N	Health and Social Work	3458	4592	4716
O	Other Social and Related Community Services	10721	9758	9333
	TOTAL	807,659	885,957	818,615

Source: Import-Export Survey 2009

Table 9.4 Exports by Industry

Industry	Description	2007 ('000) Ang.	2008 ('000) Ang.	2009 ('000) Ang.
A / B	Agriculture, Hunting, and Forestry	38	41	54
D / E	Manufacturing	2352	2656	3544
F	Construction	3764	5000	4594
G	Wholesale and Retail Trade	97347	104496	98517
H	Hotels and Restaurants	3940	4675	4489
	TOTAL	107,441	116,868	111,198

Source: Import-Export Survey 2009

10. Transport and Communication

Included in this section are various aspects of transport & communication namely:

- Registered vehicles

-Driver License examination results, for which the following categorisations are made:

Category A:

A motorcycle without side-car, with an engine of more than 250cc with manual transmission.
Helmet is compulsory. (Changing gear with the foot.) (18 years and up)

Category B:

A motor vehicle designed to transport people with no more than 8 seats excluding the driver or
a motor vehicle designed to transport cargo with a total weight of no more than 3500 kg.
(Manual transmission)(18 years and up)

Category C:

A truck with a weight of more than 3500 kg. (21 years and up)

Category D:

A bus with more than 8 seats excluding the driver. (21 years and up)

Category E:

A trailer heavier than 750 kg., where the driver has a valid driving license category B, C or D.
(21 years and up)

- Number of Traffic accidents

- Aircraft, Passenger & Air cargo movements at Princess Juliana International Airport, St.
Maarten

Table 10.1 Number of Motor Vehicles Registered 1)

	2005	2006	2007	2008	2009	2010
Passenger cars	13887	15210	15860	17882	18464	18225
Motor lorries and pick-ups	2324	2335	2780	2950	3043	3025
Motor buses	181	184	197	135	189	197
Taxis	222	228	227	249	260	286
Rental cars	1952	2418	2205	2496	2679	2997
Motorcycles, incl. Mopeds	380	630	363	828	757	705
Number of passenger cars per 1000 inhabitants	369	391	396	437	451	487

Source: Island Receiver's Office**1) Excluding motor vehicles owned by the government****10.2 Traffic Accidents**

	2007	2008	2009	2010
Number of accidents	587	811	780	509
Number of accidents with injury	193	243	237	181
Number of victims with injury	240	311	289	241
Number of deaths	3	7	2	7
Accidents caused by:				
Driving Under Influence (DUI)	12	16	11	17
Old-age, exhaustion, illness	9	10	19	2
Hit-and-run	125	141	177	165

Source: Korps Politie Sint Maarten**Table 10.3 Number of Driver Licenses Exams (theoretical and practical) by category**

	2009		2010	
	pass	fail	pass	fail
Category A	48	0	55	0
Category B	690	5	770	5
Category C	75	0	72	0
Category D	60	0	67	0
Category E	13	0	13	0
Total	886	5	977	5

Source: Department of Economic Inspection**Table 10.4 Households with Television/Cable, Census 2001**

Television		Cable	
absolute	relative	absolute	relative
10788	92	7856	67

Table 10.5 Households with Internet connection and computer, Census 2001

Internet		Computer	
absolute	relative	absolute	relative
1759	15	2932	25

Table 10.6 Letters Received by Region of Origin, Netherlands Antilles

	2005	2006	2007	2008	2009
North America	34325	32508	34307	23254	8028
South and Central America	1881	1692	1568	1604	1289
Europe	37753	32211	25616	26891	24929
The Netherlands	76525	78314	76975	69207	55345
Caribbean	7516	6086	8219	8695	5797
Other	1417	1651	1762	1685	2085
TOTAL	159,417	152,462	148,447	131,336	97,473

Source: New Postal Services N.A.

Table 10.7 Letters sent by Region of Destination, Netherlands Antilles

	2005	2006	2007	2008	2009
North America	7371	9419	20584	36193	19051
South and Central America	2904	3499	3341	3464	6903
Europe					
The Netherlands	15073	17050	6024	5823	14348
Rest of Europe	2916	5232	15930	14522	2558
Caribbean	54629	47210	44857	60721	55738
Other	80	6	.	.	8
TOTAL	82,973	82,416	90,736	120,723	98,606

Source: New Postal Services N.A.

Table 10.8 Aircraft Movements at Princess Juliana International Airport -St. Maarten

	2003	2004	2005	2006	2007	2008	2009	2010
Commercial landings	59,124	64,485	69,388	70,274	63,088	60,414	54,097	51,771
General Aviation landings	8,445	8,953	9,051	8,598	11,630	11,451	8,484	9,036
Military landings	69	62	114	142	51	71	46	63
Total	67,638	73,500	78,553	79,014	74,769	71,936	62,627	60,870

Source: Statistical Department PJIAE N.V.

Table 10.9 Passenger Movement at Princess Juliana International Airport

	2005	2006	2007	2008	2009	2010
Arriving (Deplaned Pax)	745,972	746,003	739,617	768,229	721,736	729,945
Total Departing (Enplaned Pax)	756,077	759,465	775,618	783,178	727,248	748,225
Departing (Enplaned Pax) - Int'l	532,301	567,340	607,215	627,977	584,886	597,870
Departing (Enplaned Pax) - Domestic	38,386	43,041	58,274	59,388	61,950	62,666
Departing (Enplaned Pax) - Transfer	185,390	149,084	110,129	95,813	80,412	87,689
Transit	168,493	137,919	137,097	175,249	176,980	166,935
Total Passenger Movement	1,670,542	1,643,387	1,652,332	1,726,656	1,625,964	1,645,105

Source: Statistical Department PJIAE N.V.

Table 10.10 Air Cargo Movement (per ton) at Princess Juliana International Airport

	2005	2006	2007	2008	2009	2010
Cargo In	7,228,033	6,545,882	6,883,202	7,232,857	6,555,468	5,825,473
Cargo Out	969,878	785,054	1,024,775	1,474,212	1,335,172	1,245,164
Mail In	550,787	475,206	361,991	466,383	553,613	321,728
Mail Out	275,604	251,167	234,961	275,277	175,923	151,661
Total	9,024,302	8,057,309	8,504,929	9,448,729	8,620,176	7,544,026

Source: Statistical Department PJIAE N.V.

11. National Accounts

Economic activities are characterized by numerous transactions among the government, the financial and nonfinancial sector, the household sector, non-profit institutions and the rest of the world.

National accounts provide an overview of the economic process in a certain year.

The following table has been compiled on the basis of the System of National Accounts 1993 (SNA 93), and refers to estimates.

Table 11.1 Gross Domestic Product by sector and Industry (mln ANG.)

	2005	2006	2007	2008	2009	
Non-financial corporations						
A+B+C	Agriculture, fishing and mining	4.1	5.7	5.9	6.1	6.1
D	Manufacturing	28.9	29.9	31.9	31.6	34.8
E	Electricity, gas and water	63.4	66.3	71.6	77.2	78.3
F	Construction	103.8	120.0	132.0	137.4	137.6
G	Trade	191.5	213.5	226.3	236.4	230.8
H	Hotels and restaurants	81.4	82.5	83.3	98.6	92.9
I	Transport, storage and communications	112.0	118.9	125.5	142.4	143.1
K	Real estate, renting and business activities	81.2	90.3	98.6	100.4	101.3
M	Education private	6.7	7.2	7.7	8.3	8.0
N	Health and social work	20.7	22.7	24.9	27.8	28.7
O	Other community, social and personal service activities	63.4	68.6	73.9	75.9	72.6
	Value added, gross, marketprices	757.1	825.6	881.6	942.1	934.3
Financial corporations						
J	Financial intermediation	89.5	95.7	104.4	110.7	116.3
	Value added, gross, marketprices	89.5	95.7	104.4	110.7	116.3
Government						
A+B	Agriculture	0.0	0.0	0.0	0.0	0.0
I	Transport, storage and communications	1.9	1.8	2.0	2.2	2.3
K	Real estate, renting and business activities	0.0	0.0	0.0	0.0	0.0
L	Public administration and defense; compulsory social security	64.7	62.5	66.7	74.4	77.8
M	Education	4.9	4.7	5.1	5.6	5.9
N	Health and social work	6.8	6.5	7.0	7.8	8.1
O	Other community, social and personal service activities	14.2	13.7	14.7	16.4	17.1
	Value added, gross, marketprices	92.6	89.3	95.4	106.4	111.3
Households & Non-profit institutions serving households						
A+B	Agriculture and fishing	0.2				
D	Manufacturing	0.1				
F	Construction	0.4				
G	Trade	0.3				
H	Hotels and restaurants	0.3				
I	Transport, storage and communications	9.7				
K	Real estate, renting and business activities	128.9				
N	Health and social work	0.5				
O	Other community, social and personal service activities	4.2				
P	Private households	7.2				
	Value added, gross, marketprices	151.9	157.4	163.7	166.8	168.3
	Total Value Added gross, market prices	1091.2	1168.1	1245.0	1325.9	1330.1
	plus Taxes less subsidies on products	112.0	120.4	129.7	132.1	127.3
	minus Fisim	26.8	28.6	32.5	34.3	36.5
	Domestic Product gross, market prices	1176.4	1259.9	1342.2	1423.8	1421.0
	Nominal GDP Growth	7.5	7.1	6.5	6.1	-0.3
	Inflation	3.1	2.3	2.3	4.6	0.7
	Real GDP Growth	4.8	5.2	4.5	1.6	-0.9

12. Prices

Prices of goods and services are constantly subject to change for various reasons. Price indices aim at providing a summary overview of these prices changes. The Consumer Price Index (CPI) reflects the changes in the prices of a basket of goods and services as consumed by family households in a certain base period. The CPI is widely used as an indicator of inflationary trends in the economy and serves as a cost-of-living index.¹

The Household Budget Survey (HBS) is the basis for calculating the consumer price index on St. Maarten. This survey was last conducted by CBS-Neth. Antilles in 2004/2005. The HBS is scheduled to be repeated by STAT in 2013 after which the CPI will be rebased.

The tables presented in this section comprise the historical end-of-year indices and consumer price index per expenditure category.

¹ Text quoted from previous Yearbooks of CBS-Neth. Antilles

Table 12.1 Annual consumer price index and inflation rates for St. Maarten since 1973

Year	CPI ¹⁾	Inflation (%)
1973	28.5	9.8
1974	34.9	22.4
1975	39.2	12.2
1976	40.6	3.7
1977	41.7	2.8
1978	44.3	6.2
1979	47.4	7.0
1980	53.1	11.9
1981	58.0	9.3
1982	60.0	3.5
1983	60.8	1.2
1984	61.6	1.3
1985	61.3	-0.4
1986	63.2	3.0
1987	65.5	3.8
1988	67.9	3.6
1989	70.1	3.3
1990	72.7	3.6
1991	75.2	3.5
1992	76.6	1.9
1993	77.4	1.0
1994	79.0	2.1
1995	81.3	3.0
1996	83.3	2.4
1997	85.9	3.2
1998	87.7	2.1
1999	89.5	2.0
2000	89.9	0.5
2001	90.8	1.0
2002	91.3	0.5
2003	92.8	1.6
2004	94.8	2.1
2005	97.7	3.1
2006	100.0	2.3
2007	102.3	2.3
2008	107.0	4.6
2009	107.8	0.7
2010	111.2	3.2
2011	116.3	4.6

1) 12-month average

Source: Department of Statistics

Figure 12.1 Rate of Inflation

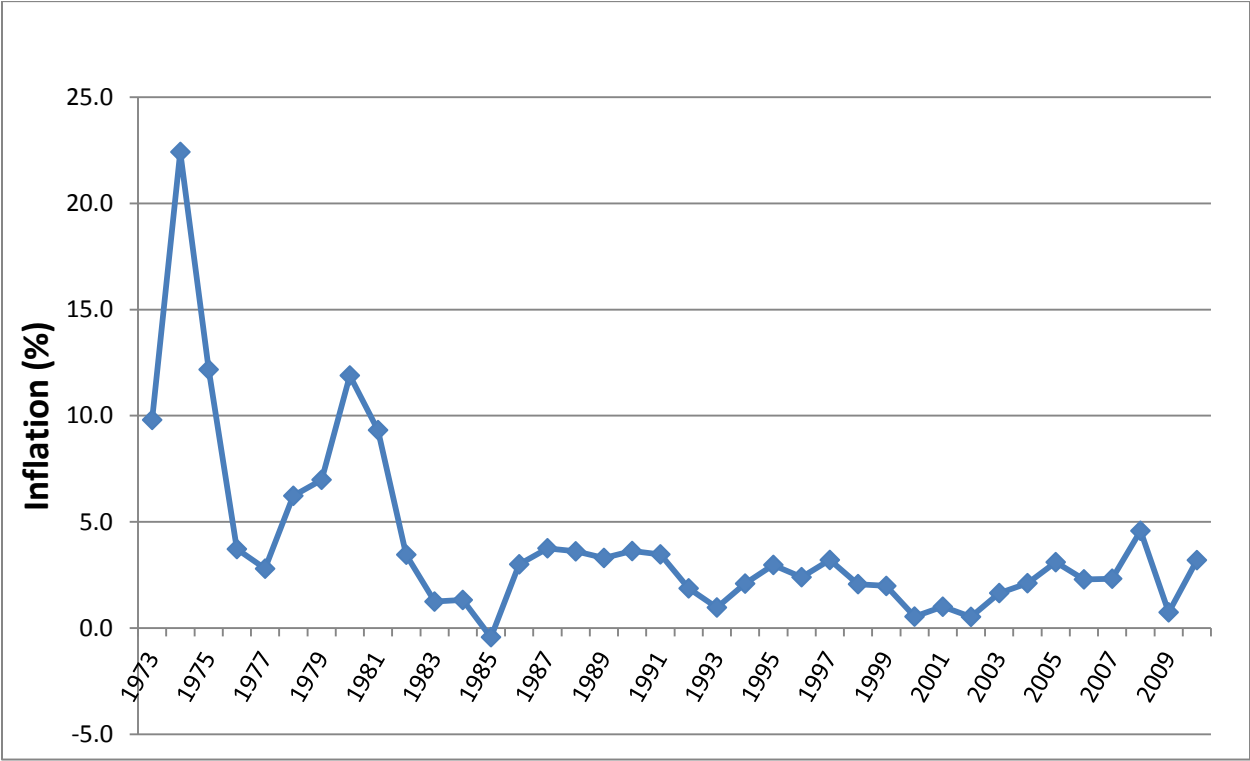


Table 12.2 Annual consumer price index numbers by expenditure category since 2001: Sint Maarten

Price index numbers based on October 2006 = 100											
Expenditure category	2001	2002	2003	2004	2005	2006	2007	2008	2009	2010	2011
TOTAL	90.8	91.3	92.8	94.8	97.7	100.0	102.3	107.0	107.8	111.2	116.3
FOOD	83.2	86.6	87.5	89.0	95.3	99.0	101.7	115.6	126.3	130.2	142.0
Cereal products	92.6	95.2	94.9	95.2	98.5	99.7	101.1	118.3	136.0	137.6	146.0
Meat and fish	79.7	84.5	82.8	84.3	92.9	98.6	101.0	113.3	127.7	135.1	150.3
Fats and cooking oils	80.9	78.5	82.2	86.9	98.8	101.0	106.7	132.4	149.6	147.8	161.1
Dairy products (except butter)	80.6	81.7	83.2	85.2	90.8	98.7	102.4	127.4	134.3	131.3	139.6
Potatoes, vegetables and fruits	75.3	78.1	82.2	84.8	96.4	99.1	101.5	113.3	121.4	129.4	147.0
Sugar and chocolate	70.4	75.3	77.0	79.1	82.7	93.7	99.9	105.8	113.9	123.9	137.7
Prepared food	94.1	97.2	97.4	97.5	98.7	99.9	101.6	112.2	118.8	120.8	130.0
Outdoor consumption	89.9	96.5	97.0	97.2	98.7	99.8	100.3	109.2	116.8	117.3	122.7
Food n.e.s.	90.8	91.9	91.9	92.6	94.8	98.7	103.1	115.3	123.5	126.9	137.6
BEVERAGES AND TOBACCO	95.1	97.1	97.2	96.7	98.4	100.1	100.5	107.6	114.2	116.6	128.0
Beverages	96.3	98.4	98.5	97.7	98.7	100.3	100.5	107.6	114.1	116.6	128.0
Tobacco	77.8	77.7	78.7	81.8	93.9	97.8	100.5	111.3	115.9	116.4	129.3
CLOTHING AND FOOTWEAR	103.9	103.4	103.3	103.3	101.7	100.1	100.7	102.5	104.1	104.6	106.1
Clothing	104.9	104.2	104.2	104.2	102.1	100.1	101.1	102.7	103.2	103.4	104.8
Footwear	99.6	100.0	99.8	99.8	100.3	100.0	99.0	101.8	108.2	109.5	111.7
HOUSING	88.1	88.6	92.0	95.5	98.4	100.6	104.3	110.1	108.0	114.3	119.5
Dwelling costs	87.4	89.7	92.0	94.7	97.0	99.3	101.7	104.1	106.4	108.8	111.3
Energy expenses	87.6	84.1	90.6	100.7	109.5	110.9	118.8	143.6	117.8	146.9	166.2
Maintenance of dwelling	86.3	86.0	88.9	90.0	91.4	95.9	101.7	104.9	109.0	108.1	111.6
Garden maintenance	86.1	86.7	88.7	92.3	95.0	98.7	101.5	105.4	106.3	111.0	127.4
Water	100.0	86.8	99.1	100.0	100.0	100.0	100.0	100.0	100.0	100.0	100.0
HOUSEHOLD FURNISHING AND APPLIANCES	93.1	93.7	94.6	95.2	98.0	99.8	102.2	104.6	109.2	110.3	114.4
Furniture and illumination	101.4	100.5	100.0	100.0	100.0	100.0	100.0	101.6	106.2	104.8	107.3
Upholstery and dwelling textile	114.5	103.2	100.1	100.0	100.0	100.0	99.8	99.2	97.4	96.3	99.3
Household appliances and tools	109.2	102.5	100.0	100.0	100.0	100.1	100.4	98.8	107.8	107.0	100.0
Household articles	84.0	93.9	95.9	94.4	97.0	99.4	100.6	105.1	114.2	118.1	124.4
Household expenses n.e.s.	93.3	95.1	92.3	92.4	95.4	98.6	104.1	114.2	123.7	134.7	171.1
Domestic services	77.0	81.8	87.8	90.4	97.1	101.5	113.5	117.9	122.8	124.4	128.0
Household furnishing n.e.s.	96.5	94.9	95.3	96.3	98.3	99.7	100.4	104.1	106.6	107.0	105.7
MEDICAL CARE	101.6	101.5	102.0	101.0	100.0	100.0	100.0	100.1	101.5	102.2	103.8
Medical care	101.6	101.5	102.0	101.0	100.0	100.0	100.0	100.1	101.5	102.2	103.8
TRANSPORTATION AND COMMUNICATION	91.5	89.1	89.6	92.5	96.1	99.6	101.0	103.3	102.0	103.3	108.2
Transport vehicles in ownership ¹⁾	87.1	87.7	88.4	92.9	93.9	99.3	102.0	103.8	108.9	108.3	118.5
Expenses for own transport vehicles ¹⁾	76.8	77.2	79.1	83.1	94.5	99.4	102.3	110.4	101.6	107.7	117.4
Transport services	113.8	101.7	100.0	100.0	100.0	100.0	100.0	100.0	100.0	100.0	100.0
Communication	101.7	99.9	100.0	100.0	100.0	100.0	99.7	99.0	98.0	97.7	97.3
RECREATION AND EDUCATION	95.6	96.9	97.2	97.4	98.2	99.6	100.3	100.1	100.4	101.2	102.6
Recreation	100.5	100.2	100.0	100.1	99.9	100.0	99.7	96.6	96.9	97.0	99.1
Entertainment and culture	97.4	97.7	96.9	97.1	98.7	100.0	101.9	105.7	106.5	109.5	114.2
Books etc.	94.6	95.9	99.4	100.0	100.0	100.0	99.9	107.2	109.1	109.8	111.5
Education	85.6	90.6	90.7	90.7	93.9	98.7	100.9	102.5	102.3	103.6	103.7
Hobby articles	100.0	100.0	100.0	100.0	100.0	100.0	100.0	101.7	102.2	102.2	72.8
MISCELLANEOUS	94.7	96.5	97.3	97.9	99.1	99.9	100.7	102.8	105.7	107.6	110.9
Personal body care	97.5	98.7	99.5	99.4	99.6	99.9	100.4	101.2	103.3	105.5	109.2
Insurances	93.5	98.1	98.3	98.3	99.3	100.0	100.5	100.5	102.3	103.4	104.3
Commodities and services n.e.s.	93.7	94.2	95.3	96.8	98.6	99.9	101.3	106.6	111.1	113.7	119.0

13. Social Affairs

The statistical data on social affairs gives an indication of the way in which people are accommodated within the social security system. Within the social security system each family is guaranteed at least a minimum of resources to meet its basic needs.

The minimum wage per hour for Sint Maarten per September 1st, 2011 is Naf 7,96. This wage is valid for workers of 21 years and older. For the age group of 16-20 years a youth minimum is applicable for each specific age: 16/17:65%; age18:75%; age19:85% and age 20: 90% of the indicated minimum age.

Table 13.1 Number of Persons Receiving Free Medical Assistance ("PP Cards")				
	2005	2006	2007	2008
	1398	715	.	.
Source: Social Affairs Service Curaçao				

Table 13.2 Number of Requests for Free Legal Assistance						
	2004	2005	2006	2007	2008	2009
Divorce	47	43	31	41	35	65
Labour conflict	91	95	110	112	119	172
Other civil cases	93	108	103	85	80	91
Criminal cases	78	125	132	106	178	112
Picket	199	350	296	262	351	272
Total	508	721	672	606	763	712
Source: Directorate of Labour Affairs						

14. Justice and Security

The data presented in this publication are limited to the number of crimes reported by the police, and the number of deportees of illegal-immigrants. Statistics from the St. Maarten Police Department do not presently include data on narcotics.

Table 14.1 Number of crimes reported to the police by type of crime

	2005	2006	2007	2008	2009	2010
Burglary	571	546	475	511	412	667
Burglary (House)	498	444	584	548	522	199
Burglary (Car)	286
Car Theft	285	353	346	190	200	253
Theft	647	627	512	510	494	462
Robbery	231	229	296	281	232	238
Extortion	30	32	26	4	2	1
Homicide	6	15	1	6	7	3
Attempted homicide	9	6	12	10	8	9
Murder	1	3	3	4	0	5
Attempted murder	0	1	4	3	2	3
Wrongful death	0	0	0	0	1	0
Open violence	40	40	46	33	12	9
Threat	144	149	165	166	148	124
Ill-treatment	115	163	134	181	166	171
Ill-treatment with a weapon	94	112	122	85	83	82
Grievous bodily Harm	4	5	1	0	6	16
Destruction	160	152	199	223	158	173
Swindling	27	34	14	59	14	8
Fraud	11	18	8	14	15	14
Blackmail	8	10	12	3	7	6
Rape	11	15	13	14	15	8
Sexual Assault/Molestation	2	5	5	4	1	3
Sexual intercourse with a girl 12-15yrs	2	2	4	3	2	0
Sexual intercourse with a girl under 12yrs	3	4	2	4	2	0
Illicit sexual abuse	1	1	2	4	6	6
Arson	6	6	5	6	10	5
Total	2906	2972	2991	2866	2525	2465

Source: Korps Politie Sint Maarten

Table 14.2 Deported illegal immigrants

Country of origin/region	2009	2010
Jamaica	159	144
Haiti	123	60
Dominican Republic	79	83
Guyana	77	74
Dominica	39	30
Other Caribbean	46	48
Asia	7	6
Africa	5	4
South-America	30	17
North-America	11	6
Europe	17	5
Total	593	477

Source: Korps Politie Sint Maarten